

Fully compliant with The Building (Amendment) Regulations 2018:

The Government's ban on combustible materials in external walls, following a review of fire safety in high-rise residential buildings

Ancon[®]
SSTS and STS Thermally Insulated Balcony Connectors
For Steel-to-Steel Applications



We are one team. **We are Leviat.**

Leviat is the new name of CRH's construction accessories companies worldwide.

Under the Leviat brand, we are uniting the expertise, skills and resources of Ancon and its sister companies to create a world leader in fixing, connecting and anchoring technology.

The products you know and trust will remain an integral part of Leviat's comprehensive brand and product portfolio. As Leviat, we can offer you an extended range of specialist products and services, greater technical expertise, a larger and more agile supply chain and better, faster innovation.

By bringing together CRH's construction accessories family as one global organisation, we are better equipped to meet the needs of our customers, and the demands of construction projects, of any scale, anywhere in the world.

This is an exciting change. Join us on our journey.

Read more about Leviat at [Leviat.com](https://www.leviat.com)



Our product brands include:

Ancon[®]

HALFEN

HELIFIX

ISEDIO

PLAKA



60

locations

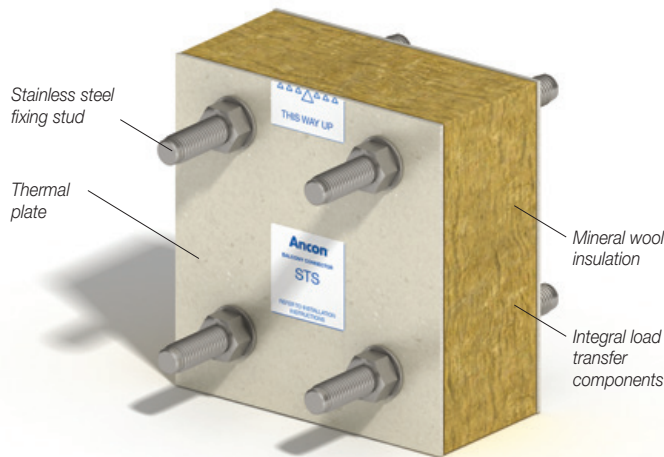
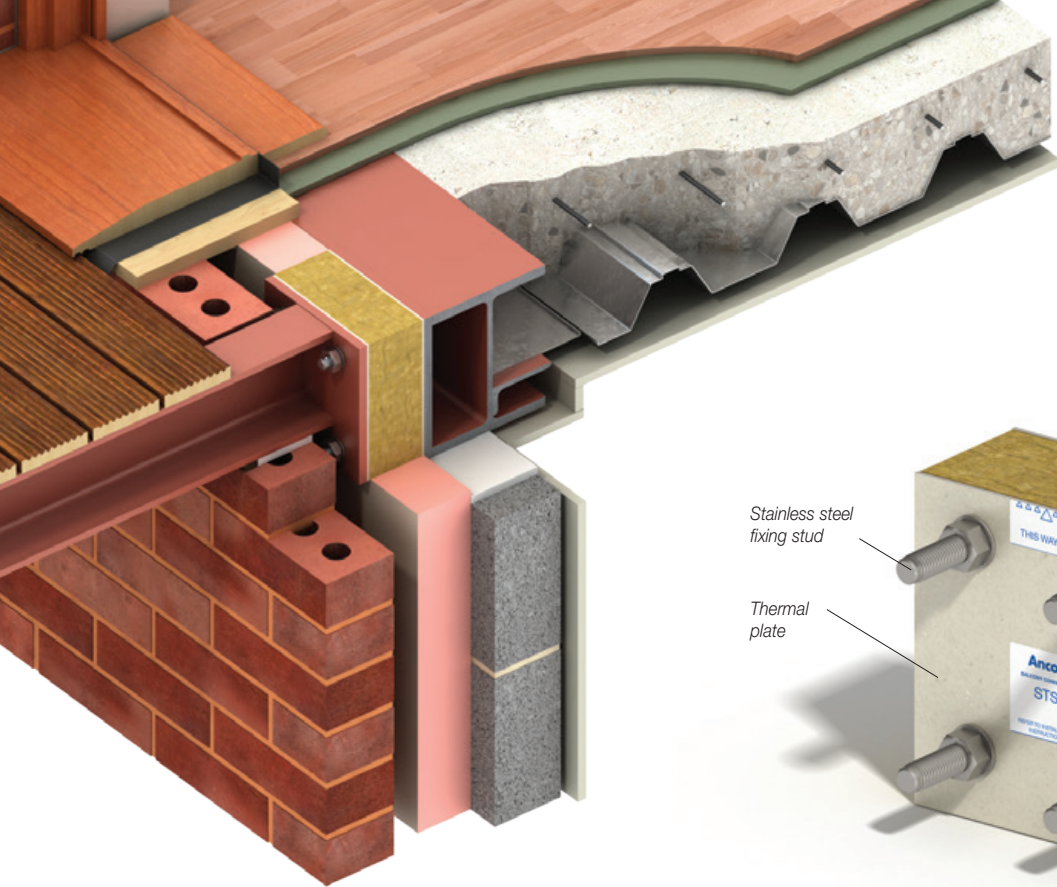
sales in
30+
countries

3000

people worldwide

Imagine. Model. Make.

Leviat.com



Steel-to-Steel Balcony Connectors

Ancon SSTS and STS are compact thermal breaks, typically used for connecting steel balconies to structural steel frames but which are equally suitable for other steel-to-steel applications.

The connectors comprise tension and compression components within a single combined unit, wrapped in class A1 non-combustible mineral wool insulation. The fabricated compression component is manufactured from either 1.4301 (grade 304) stainless steel referenced SSTS or hot-dip galvanised S355 plain carbon steel referenced STS. Stainless steel offers the greater thermal efficiency and is essential for applications requiring enhanced corrosion protection such as coastal areas.

The fabricated elements are designed to EN 1993 (Eurocode 3) and UKCA and CE marked to BS EN 1090 Part 1.

The system is available in three standard stud sizes to accommodate a wide range of loads. Manufactured to order, the vertical centres of the four A4 stainless steel fixing studs can be specified to suit the exact requirements of the application.

A thermal plate, with an independently verified European reaction-to fire classification of A2-s1,d0, is located at each steel interface.

Design resistances are provided on page 4.

System Benefits

- ✓ Comprises materials of class A1/A2 combustibility only, ideal for high-rise construction
- ✓ Proven through thermal modelling to reduce heat loss and eliminate condensation risk
- ✓ Thermal pad located at each steel interface
- ✓ Bracket fabrication UKCA and CE marked to BS EN 1090-1
- ✓ Variable fixing heights to suit application
- ✓ In the case of SSTS, fully stainless steel components offer the ultimate corrosion protection and thermal efficiency benefits



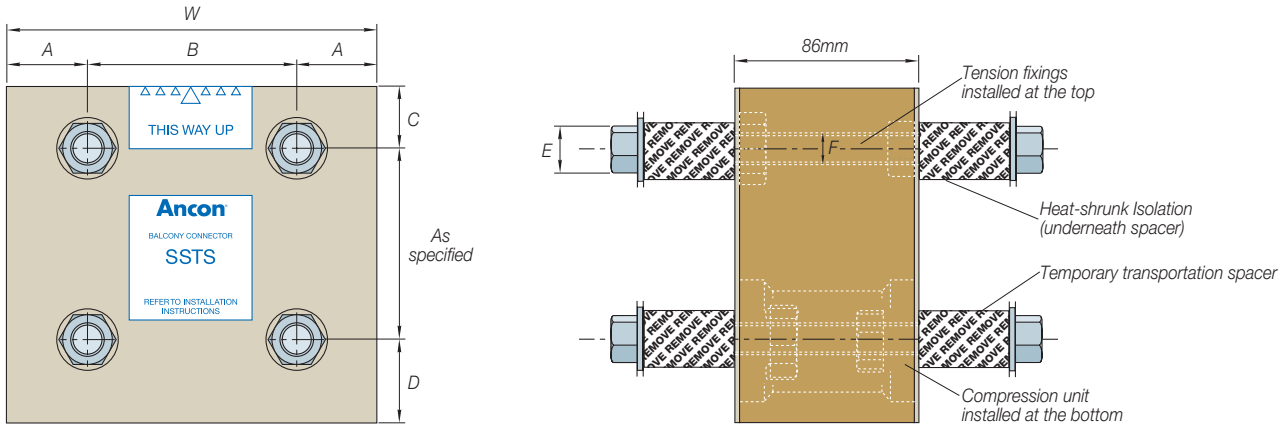
Material Combustibility

Following a review of fire safety, the Government has banned the use of combustible materials in the external walls of high-rise residential buildings in England. The Ancon SSTS and STS connectors are fully compliant with the material combustibility requirements of The Building (Amendment) Regulations 2018. All components are either European classification A1 or A2-s1,d0. Contact Leviat for further information.

Thermal Performance

Thermal modelling of a typical application showed a reduction in heat loss of almost 50% compared to a direct steel connection. It also illustrated a temperature factor within the limits detailed in BRE document IP1/06 for eliminating condensation risks in buildings of any type, even those with high humidity e.g. swimming pools (0.90).

Dimensions



Product Reference	W	A	B	Dimension (mm)			E	F
				C	D			
SSTS/STS 16A	180	40	100	30	40	24 A/F	M16	
SSTS/STS 20A	180	40	100	30	40	30 A/F	M20	
SSTS/STS 24A	190	37.5	115	40	45	36 A/F	M24	

Product Referencing System

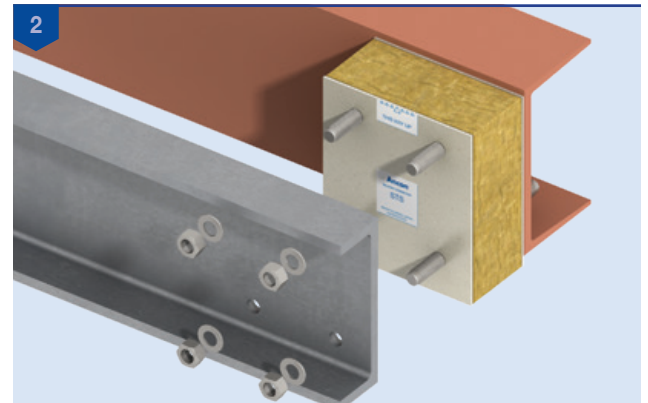
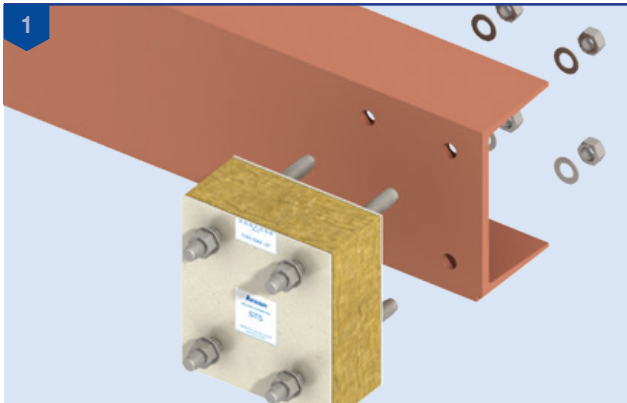
SSTS/STS 16A-140

Standard Product Reference Vertical Bolt Centres Required

Installation Guidance

The SSTS/STS Balcony Connector is supplied in a single unit with thermal plates attached to both inner and outer faces. These plates should not be removed. The assembly features all necessary steel fixings. Care should be taken to avoid damaging any balcony connector components prior to and during installation. It is essential that the connector is orientated and installed correctly.

Prior to installation of the connector, it is important to check the product dimensions against the engineer's drawings, specifically ensuring the mating parts match the connector stud centres.



The SSTS/STS Balcony Connector should be orientated so that the label indicating the uppermost face is correctly positioned and is facing out of the building.

Position the connector close to where it is to be installed. Ensure the connector is stable and not likely to fall. Carefully remove the nuts and washers from the studs on the inner face. Keep the steel nuts and steel washers close to hand. All non-metallic packing around the fixings should be discarded at this point, leaving the heat-shrunk isolation material on the stainless steel stud. Carefully lift and fit the exposed studs through the appropriate holes in the building structure. Do not force the connector into position. Re-fit the steel washers and steel nuts. Once the connector is fully aligned with the structure, torque up the nuts with a calibrated hydraulic torque wrench and suitable socket, referencing the table below.

Connector	SSTS/STS 16A	SSTS/STS 20A	SSTS/STS 24A
Wrench Size (A/F)	24	30	36
Torque (Nm)	148	288	498

Once all connectors are correctly positioned and fitted to the building structure, the balcony beams can be installed.

Remove the nuts and washers from the outer face of the connector and keep close to hand. Discard all non-metallic packing around the fixings to expose the heat-shrunk isolation on the stud.

Carefully lift the balcony fabrication, ensuring the balcony is horizontal. Align the balcony and carefully push over the exposed studs. Do not force it into position.

When positioned, re-fit the steel washers and steel nuts.

Once the balcony is fully aligned with the connector and structure, tighten the nuts to the correct torque. Remove all lifting straps.

Design Resistances

Vertical Bolt Centres	STS 16A (Galvanised Steel)			SSTS 16A (Stainless Steel)		
	Design Shear Resistance V_{Rd} (kN)	Design Resistance for Bending M_{Rd} (kNm)	Design Resistance for Tension N_{Rd} (kN)	Design Shear Resistance V_{Rd} (kN)	Design Resistance for Bending M_{Rd} (kNm)	Design Resistance for Tension N_{Rd} (kN)
70mm	60.75	12.66	180.9	39.36	12.66	180.9
75mm		13.57			13.57	
100mm		18.09			18.09	
125mm		22.61			22.61	
150mm		27.14			27.14	
175mm		31.66			31.66	
200mm		36.18			36.18	
225mm		40.70			40.70	
250mm		45.23			45.23	
275mm		49.75			49.75	
300mm		54.27			54.27	
325mm		58.79			58.79	
350mm	63.32	63.32				

Vertical Bolt Centres	STS 20A (Galvanised Steel)			SSTS 20A (Stainless Steel)		
	Design Shear Resistance V_{Rd} (kN)	Design Resistance for Bending M_{Rd} (kNm)	Design Resistance for Tension N_{Rd} (kN)	Design Shear Resistance V_{Rd} (kN)	Design Resistance for Bending M_{Rd} (kNm)	Design Resistance for Tension N_{Rd} (kN)
70mm	60.75	19.75	282.2	39.36	13.87	198.2
75mm		21.17			14.87	
100mm		28.22			19.82	
125mm		35.28			24.78	
150mm		42.33			29.73	
175mm		49.39			34.69	
200mm		56.44			39.64	
225mm		63.50			44.60	
250mm		70.55			49.55	
275mm		77.61			54.51	
300mm		84.66			59.46	
325mm		91.72			64.42	
350mm	98.77	69.37				

Vertical Bolt Centres	STS 24A (Galvanised Steel)			SSTS 24A (Stainless Steel)		
	Design Shear Resistance V_{Rd} (kN)	Design Resistance for Bending M_{Rd} (kNm)	Design Resistance for Tension N_{Rd} (kN)	Design Shear Resistance V_{Rd} (kN)	Design Resistance for Bending M_{Rd} (kNm)	Design Resistance for Tension N_{Rd} (kN)
85mm	78.1	25.80	304	61.1	21.11	248.3
100mm		30.35			24.83	
125mm		37.94			31.04	
150mm		45.53			37.25	
175mm		53.11			43.45	
200mm		60.70			49.66	
225mm		68.29			55.87	
250mm		75.88			62.08	
275mm		83.46			68.28	
300mm		91.05			74.49	
325mm		98.64			80.70	
350mm		106.23			86.91	

Design Example

Known requirements:

The Factored Ultimate Shear Force per connector, V_{Ed} , is 75kN.
 The Factored Ultimate Moment per connector, M_{Ed} , is 45kNm.
 Vertical bolt centres are limited to a maximum of 150mm

From the tables:

- ✗ STS16A at 150mm centres gives $V_{Rd} = 60.75$ kN and $M_{Rd} = 27.14$ kNm
 These connectors do not give the required capacity
- ✗ STS20A at 150mm centres gives $V_{Rd} = 60.75$ kN and $M_{Rd} = 42.33$ kNm
- ✓ STS24A at 150mm centres gives $V_{Rd} = 78.1$ kN and $M_{Rd} = 45.53$ kNm.
 This connector meets the project requirements

Known requirements:

The Factored Ultimate Shear Force per connector, V_{Ed} , is 58kN
 The Factored Ultimate Moment per connector, M_{Ed} , is 35kNm
 Vertical bolt centres are limited to a maximum of 150mm

From the tables:

- ✗ SSTS16A at 150mm centres gives $V_{Rd} = 39.36$ kN and $M_{Rd} = 27.14$ kNm
- ✗ SSTS20A at 150mm centres gives $V_{Rd} = 39.36$ kN and $M_{Rd} = 29.73$ kNm
 The above connectors do not give the required capacity
- ✓ SSTS24A at 150mm centres gives $V_{Rd} = 61.1$ kN and $M_{Rd} = 37.25$ kNm
 This connector meets the project requirements

Leviat occasionally supply:

- Special units with compression components top and bottom to accommodate uplift forces
- Special heavy duty units with multiple tension components and / or compression components

Ancon standard balcony connectors are designed to offer innovative solutions for a variety of load cases and construction geometries.

For arrangements not covered by the standard connectors, bespoke engineered solutions are available upon request. Please contact our technical team to discuss your requirements.

Worldwide contacts for Leviat:

Australia

Leviat
98 Kurrajong Avenue,
Mount Druitt Sydney, NSW 2770
Tel: +61 - 2 8808 3100
Email: info.au@leviat.com

Austria

Leviat
Leonard-Bernstein-Str. 10
Saturn Tower, 1220 Wien
Tel: +43 - 1 - 259 6770
Email: info.at@leviat.com

Belgium

Leviat
Industrielaan 2
1740 Ternat
Tel: +32 - 2 - 582 29 45
Email: info.be@leviat.com

China

Leviat
Room 601 Tower D, Vantone Centre
No. A6 Chao Yang Men Wai Street
Chaoyang District
Beijing · P.R. China 100020
Tel: +86 - 10 5907 3200
Email: info.cn@leviat.com

Czech Republic

Leviat
Business Center Šafránková
Šafránková 1238/1
155 00 Praha 5
Tel: +420 - 311 - 690 060
Email: info.cz@leviat.com

Finland

Leviat
Vädursgatan 5
412 50 Göteborg / Sweden
Tel: +358 (0)10 6338781
Email: info.fi@leviat.com

France

Leviat
6, Rue de Cabanis
FR 31240 L'Union
Toulouse
Tel: +33 - 5 - 34 25 54 82
Email: info.fr@leviat.com

Germany

Leviat
Liebigstrasse 14
40764 Langenfeld
Tel: +49 - 2173 - 970 - 0
Email: info.de@leviat.com

India

Leviat
309, 3rd Floor, Orion Business Park
Ghodbunder Road, Kapurbawdi,
Thane West, Thane,
Maharashtra 400607
Tel: +91 - 22 2589 2032
Email: info.in@leviat.com

Italy

Leviat
Via F.lli Bronzetti 28
24124 Bergamo
Tel: +39 - 035 - 0760711
Email: info.it@leviat.com

Malaysia

Leviat
28 Jalan Anggerik Mokara 31/59
Kota Kemuning, 40460 Shah Alam
Selangor
Tel: +603 - 5122 4182
Email: info.my@leviat.com

Netherlands

Leviat
Oostermaat 3
7623 CS Borne
Tel: +31 - 74 - 267 14 49
Email: info.nl@leviat.com

New Zealand

Leviat
2/19 Nuttall Drive, Hillsborough,
Christchurch 8022
Tel: +64 - 3 376 5205
Email: info.nz@leviat.com

Norway

Leviat
Vestre Svanholmen 5
4313 Sandnes
Tel: +47 - 51 82 34 00
Email: info.no@leviat.com

Philippines

Leviat
2933 Regus, Joy Nostalg,
ADB Avenue
Ortigas Center
Pasig City
Tel: +63 - 2 7957 6381
Email: info.ph@leviat.com

Poland

Leviat
Ul. Obornicka 287
60-691 Poznan
Tel: +48 - 61 - 622 14 14
Email: info.pl@leviat.com

Singapore

Leviat
14 Benoi Crescent
Singapore 629977
Tel: +65 - 6266 6802
Email: info.sg@leviat.com

Spain

Leviat
Poligono Industrial Santa Ana
c/ Ignacio Zuloaga, 20
28522 Rivas-Vaciamadrid
Tel: +34 - 91 632 18 40
Email: info.es@leviat.com

Sweden

Leviat
Vädursgatan 5
412 50 Göteborg
Tel: +46 - 31 - 98 58 00
Email: info.se@leviat.com

Switzerland

Leviat
Grenzstrasse 24
3250 Lyss
Tel: +41 - 31 750 3030
Email: info.ch@leviat.com

United Kingdom

Leviat
President Way, President Park,
Sheffield, S4 7UR
Tel: +44 - 114 275 5224
Email: info.uk@leviat.com

United States of America

Leviat
6467 S Falkenburg Rd.
Riverview, FL 33578
Tel: (800) 423-9140
Email: info.us@leviat.us

For countries not listed

Email: info@leviat.com

Leviat.com

Notes regarding this catalogue

© Protected by copyright. The construction applications and details provided in this publication are indicative only. In every case, project working details should be entrusted to appropriately qualified and experienced persons. Whilst every care has been exercised in the preparation of this publication to ensure that any advice, recommendations or information is accurate, no liability or responsibility of any kind is accepted by Leviat for inaccuracies or printing errors. Technical and design changes are reserved. With a policy of continuous product development, Leviat reserves the right to modify product design and specification at any time.



For more information on these products, contact:

Leviat

President Way
President Park
Sheffield, S4 7UR
United Kingdom

Tel: +44 (0) 114 275 5224
Fax: +44 (0) 114 276 8543

Email: info.ancon.uk@leviat.com

For sales and technical enquiries:
Email: reinforcement.uk@leviat.com

Ancon.co.uk
Leviat.com