

Contract work

Fibo | Company and product

Fibo Wall System

Great looking and longer lasting wall solutions
that save you from time and money!



Design your walls using high quality wall panels from Fibo. The Fibo wall system makes the work involving plastering, membrane and tiles redundant. Combine panels from our different collections to suit you or your clients style.

Standard panels are sized 600mm x 2400mm and can be mounted directly onto stud work, existing walls or on top of tiles. The strong

laminate surface can withstand both direct water and large temperature fluctuations and panels are easy to clean, require very low maintenance and have a 15 year warranty.

Our unique AquaLock system ensures the panels are easy to install.

For more information see fibosystem.com.

The product

Reasons why to choose Fibo

- Quick and easy to install
- Mount directly onto stud work, existing walls or on top of tiles
- Low maintenance and easy to clean
- No grouting required
- Invisible joints with our unique AquaLock System
- 15 year warranty

Fibo Wall panels are delivered with the Fibo AquaLock system. This makes the installation easy and gives a consistent and great result.

Design approval: D21569 No.00 + US.00
Patent approval: P24306 No.00 + US.00 + EP.00
Fire class D-s1.d0



Fibo

The Fibo factory in Lyngdal



Fibo has produced panels in Lyngdal, Norway since 1952.

In 2007 a new factory was built and in 2017 it was extended and new production- and glueing lines was installed in a 15 million Euro investment.

This will increase Fibo’s production capacity and reduce impact on the environment even more than before. A crucial choice to be a part of future sustainable growth.



Profile Assortment

All profiles are 2400 mm long

The aluminum strips are delivered pre-drilled, milled and individually packed.

| | | |
|--|--|---|
|  2-part internal corner II* 90° White ART. 163929 |  2-part internal corner II* 90° Alu ART. 163924 |  Internal corner* 90° Alu ART. 163933 |
|  2-part internal corner II* 90° White ART. 163929 |  2-part internal corner II* 90° Alu ART. 163924 |  Internal corner* 90° Alu ART. 163933 |
|  2-part stacking profile White ART. 102284 |  External corner II* 90° White ART. 163908 |  External corner II* 90° Alu ART. 163800 |
|  External corner II* 135° Alu ART. 163945 |  Base profile* Alu ART. 163910 |  L-profile II Small* Alu ART. 163317 |
|  L-profile Wide Alu ART. 163128 |  Combi profile Alu ART. 163901 | |

Fibo | Wall System

Accessories

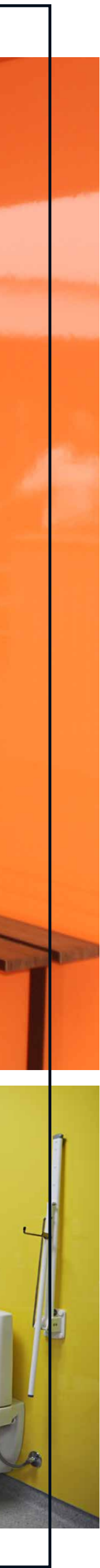


ETAG 022 Approved sealants: Fibo Seal, Fugger Seal All, Soudaseal 215 LM, CT1, Optimera Bathroom Seal and Casco Aquaseal.

Fibo | Projects

Public environment: Schools

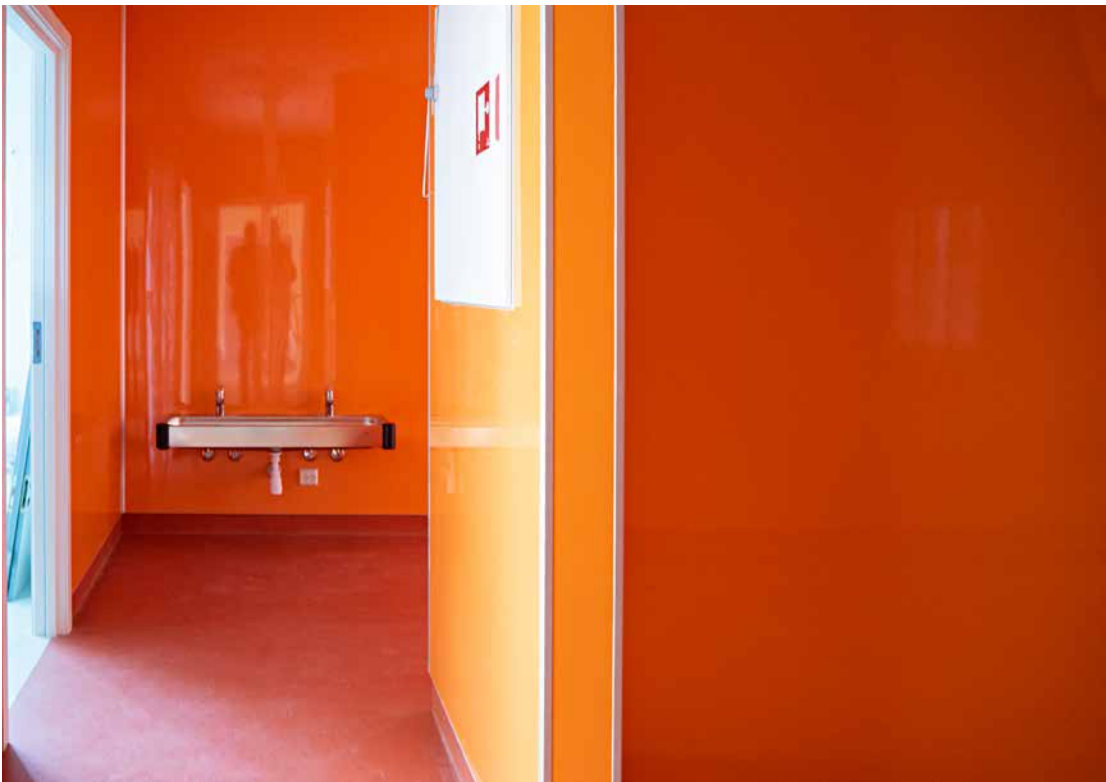




Fibo | Projects

Public environment: Nurseries



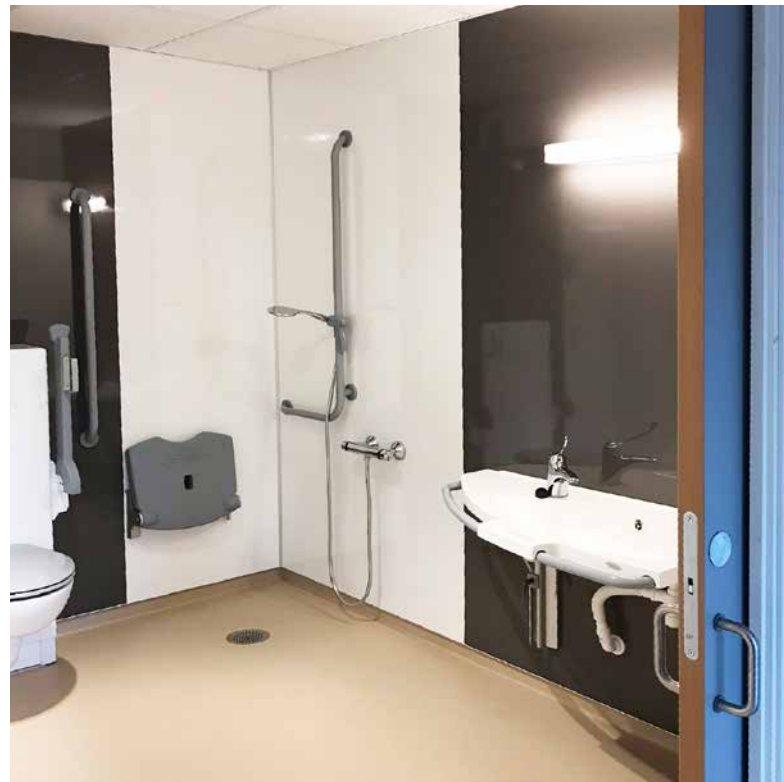
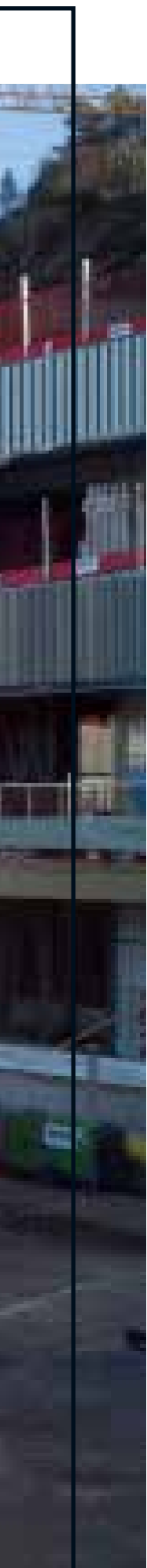




Fibo | Projects

Public environment: Care facilities







Fibo | Projects

Public environment: Sports facilities

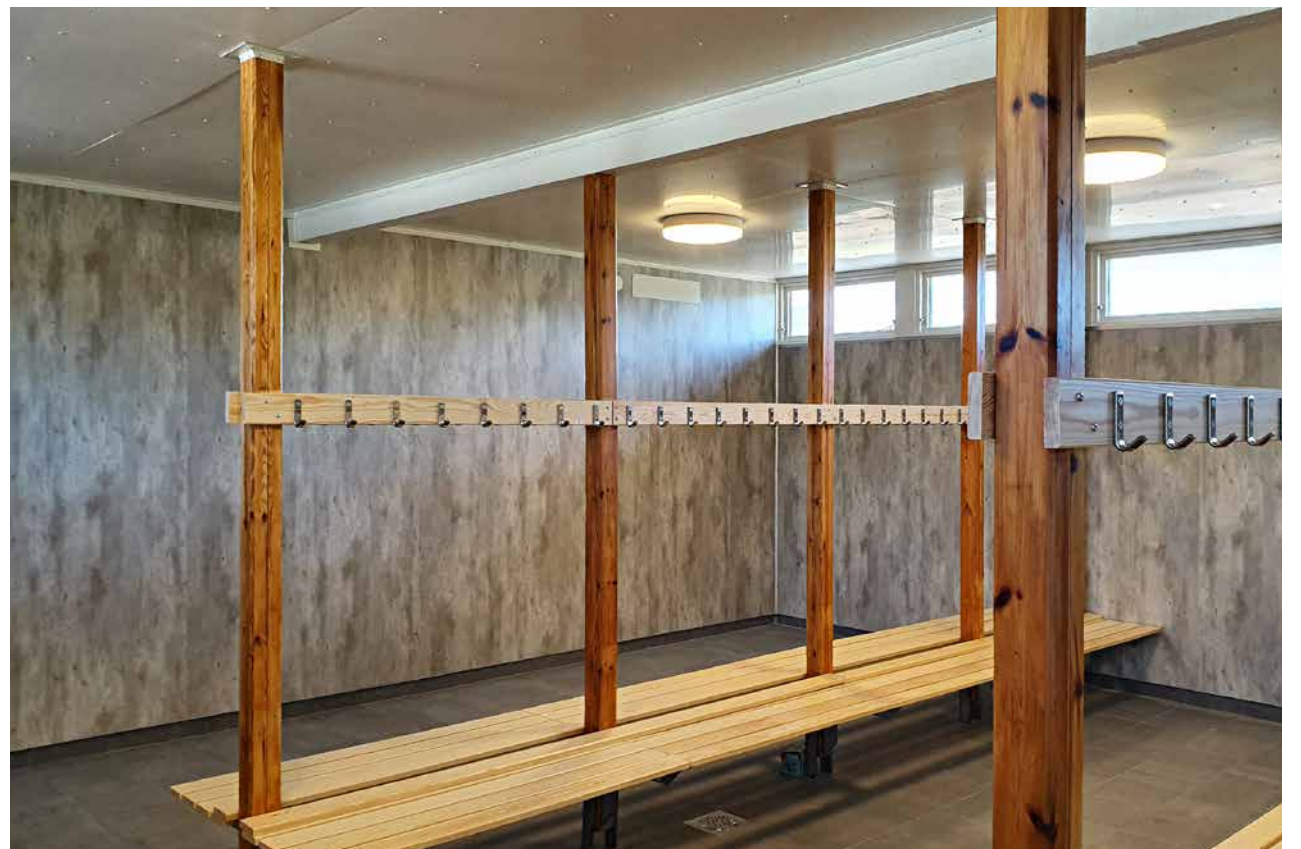
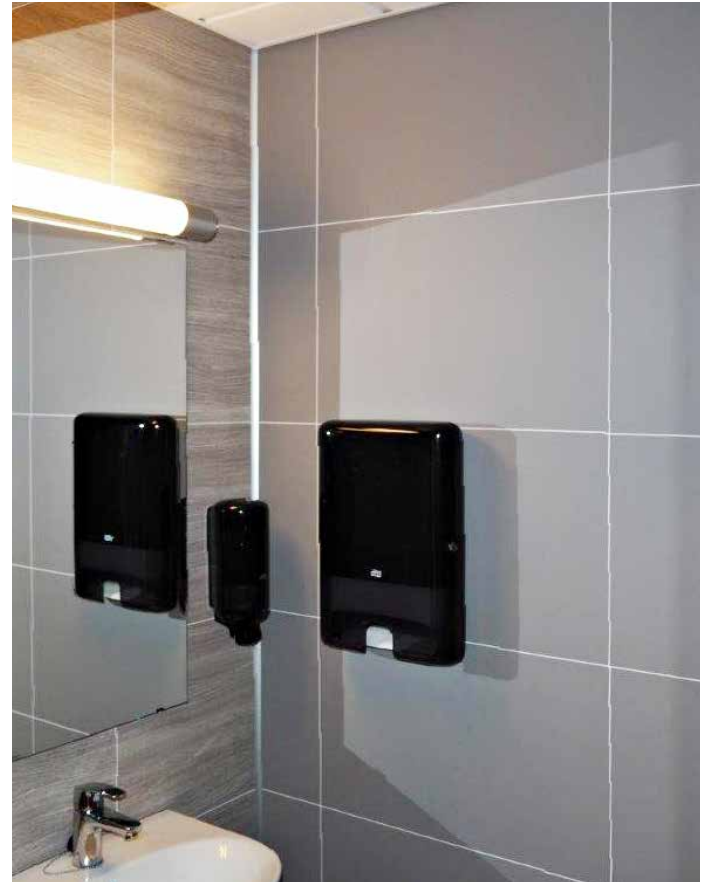




Fibo | Projects

Public environment: Toilets & service buildings







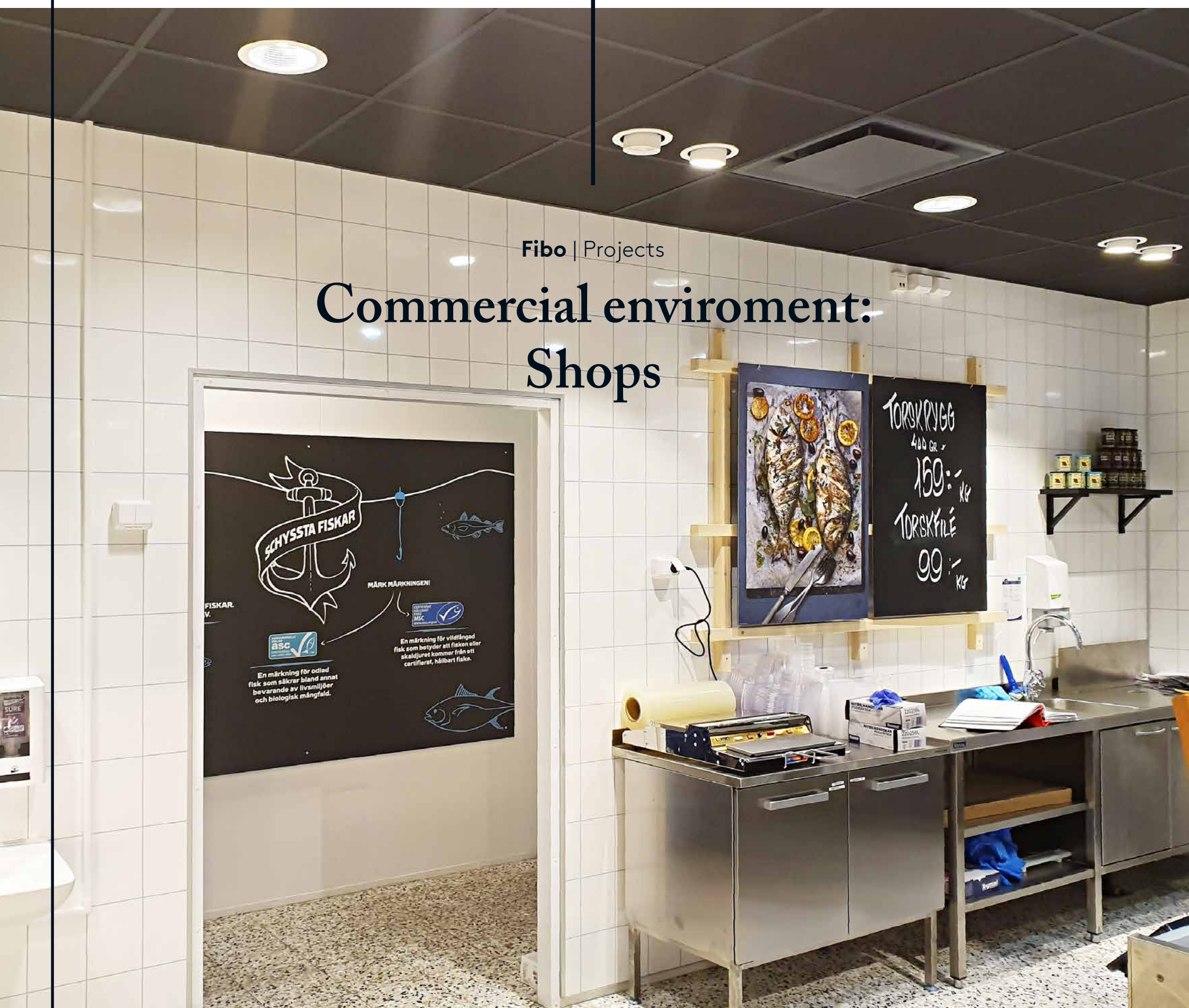
Fibo | Projects

Commercial environment: Gyms



Fibo | Projects

Commercial enviroment: Shops





A photograph of a modern commercial bathroom. The walls are covered in large, dark grey textured tiles with light grey grout. A white pedestal sink with a chrome faucet is mounted on the wall. Above the sink is a white shelf and a large mirror. A long, cylindrical light fixture is mounted on the wall above the mirror. To the right, a dark grey door with a silver handle is visible. The ceiling is made of a light-colored, fibrous material.

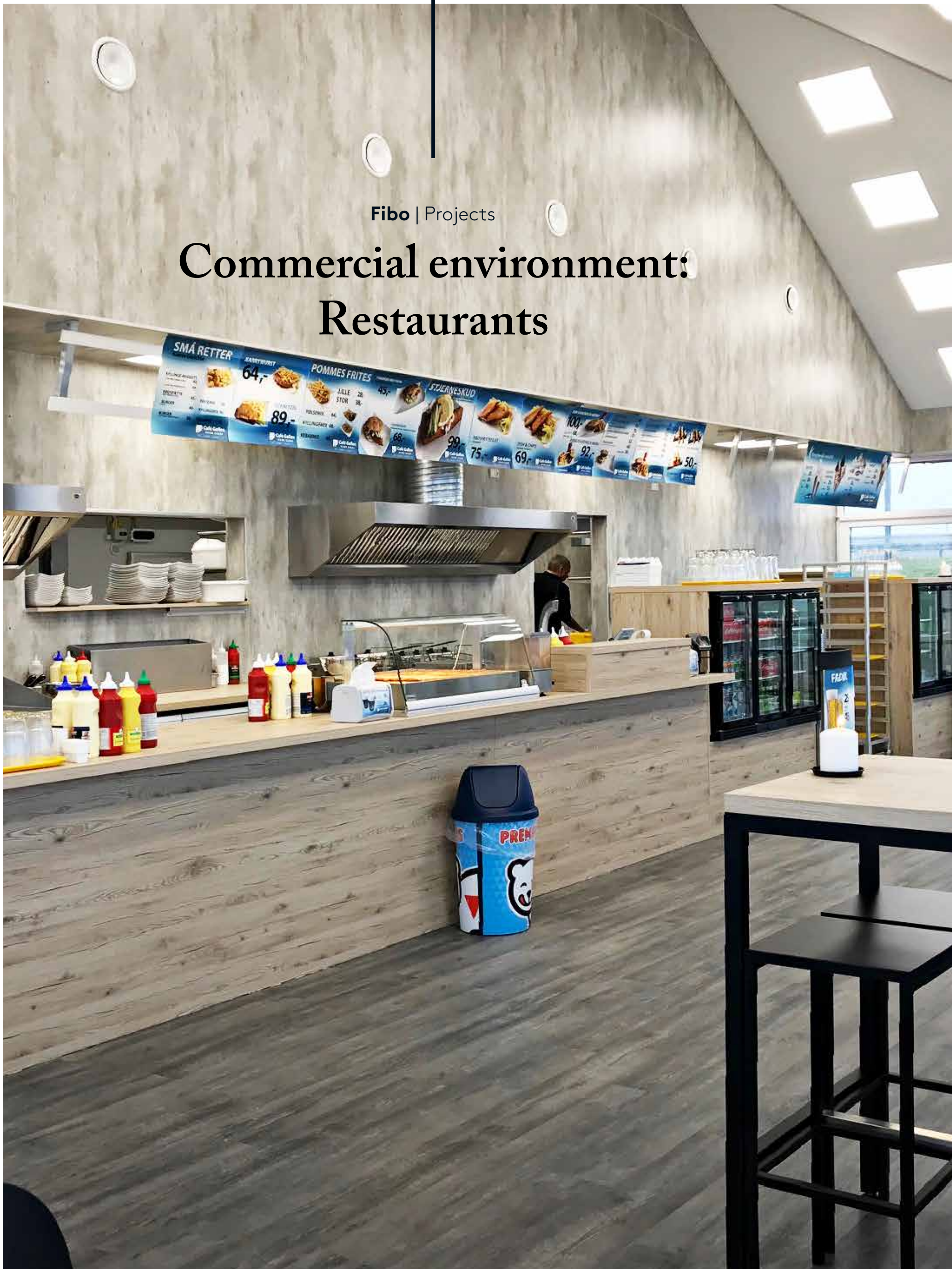
Fibo | Projects

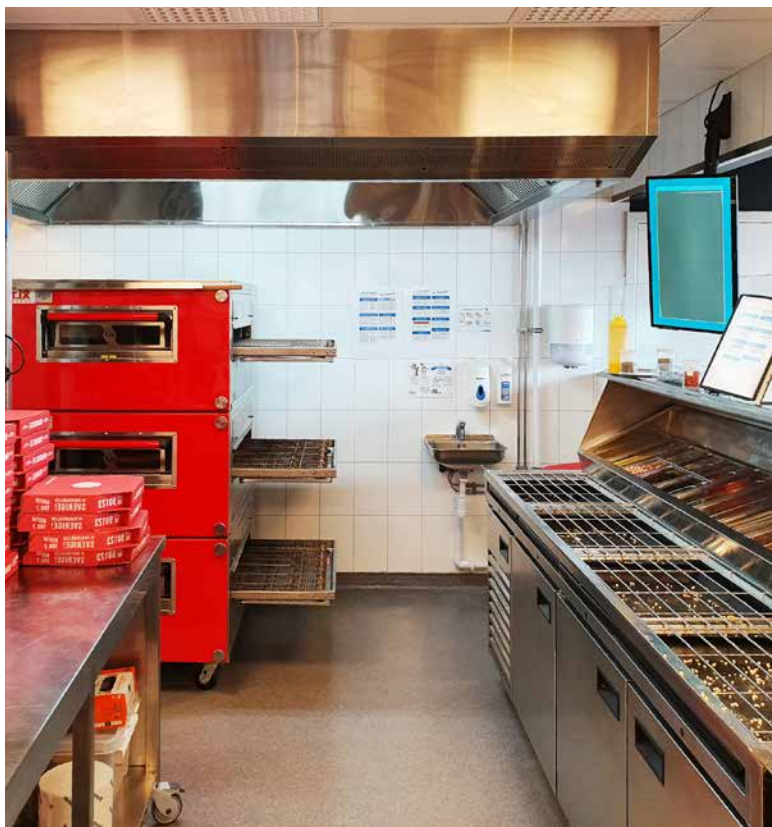
Commercial environment: Hotels



Fibo | Projects

Commercial environment: Restaurants





Fibo | Projects

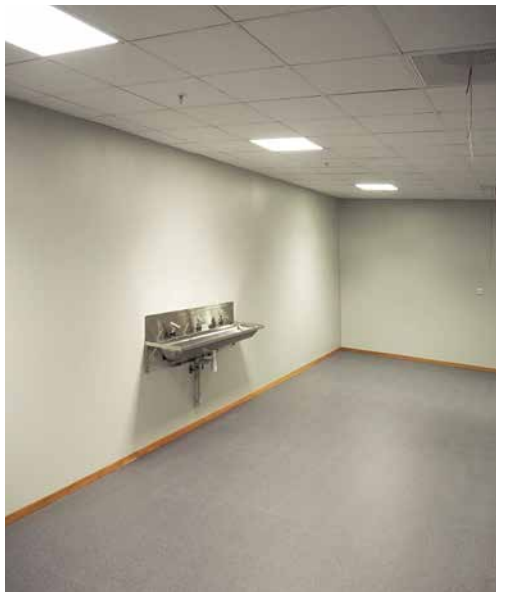
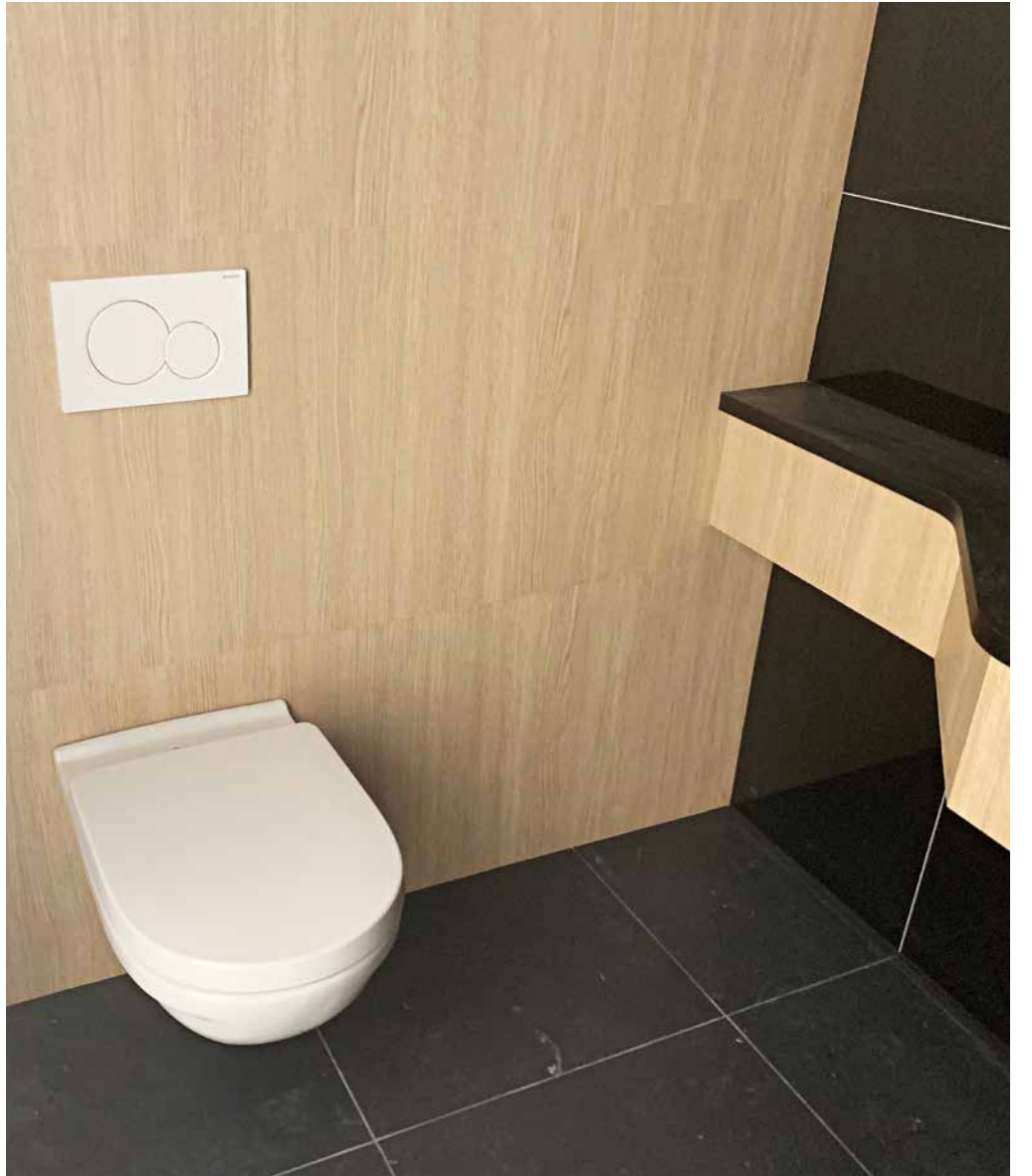
Commercial environment: Petrol stations





Fibo | Projects

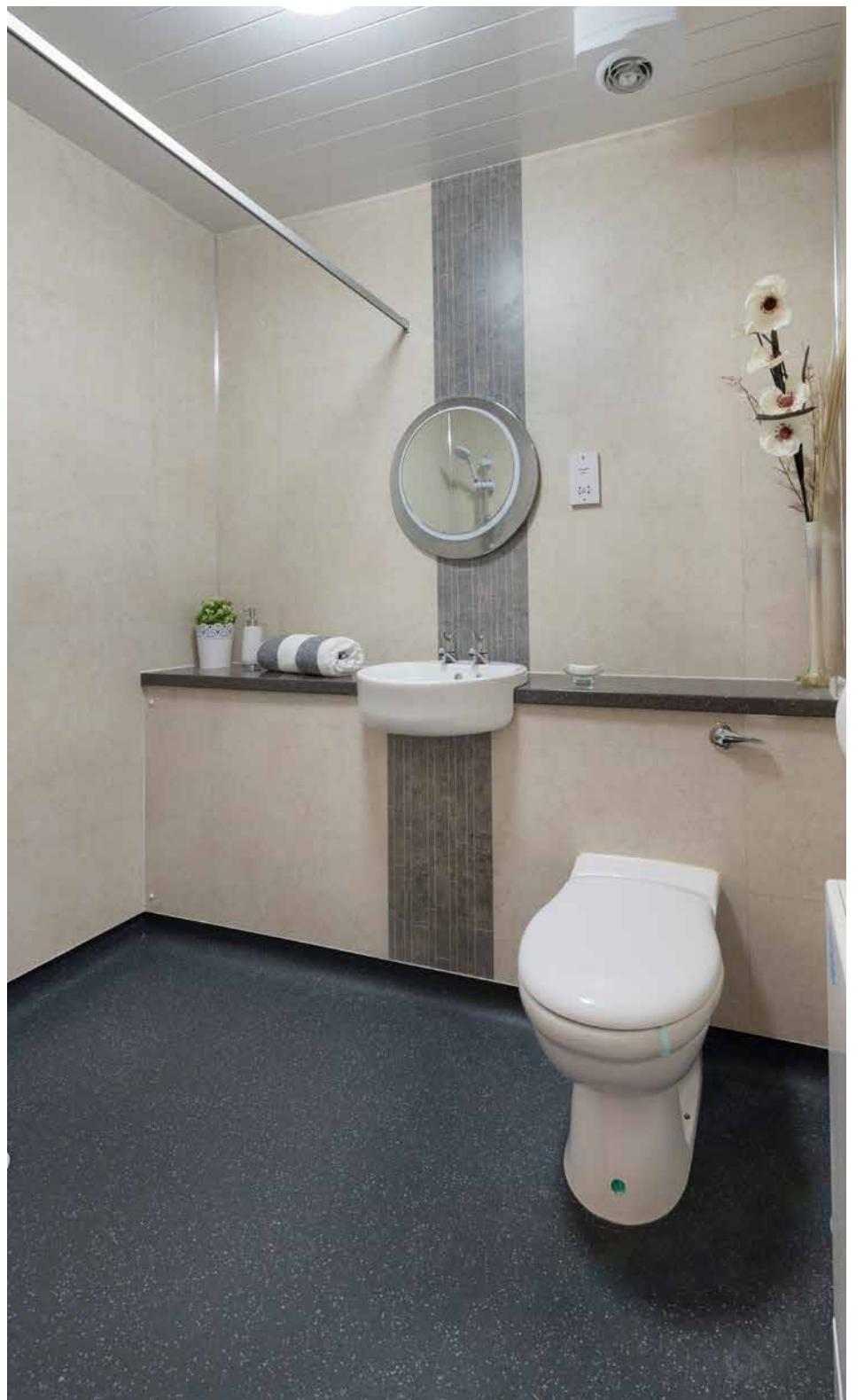
Commercial environment: Garages & Industry



Fibo | Projects

Residential buildings: Social housing





Fibo | Projects

Prefabricated: PODs

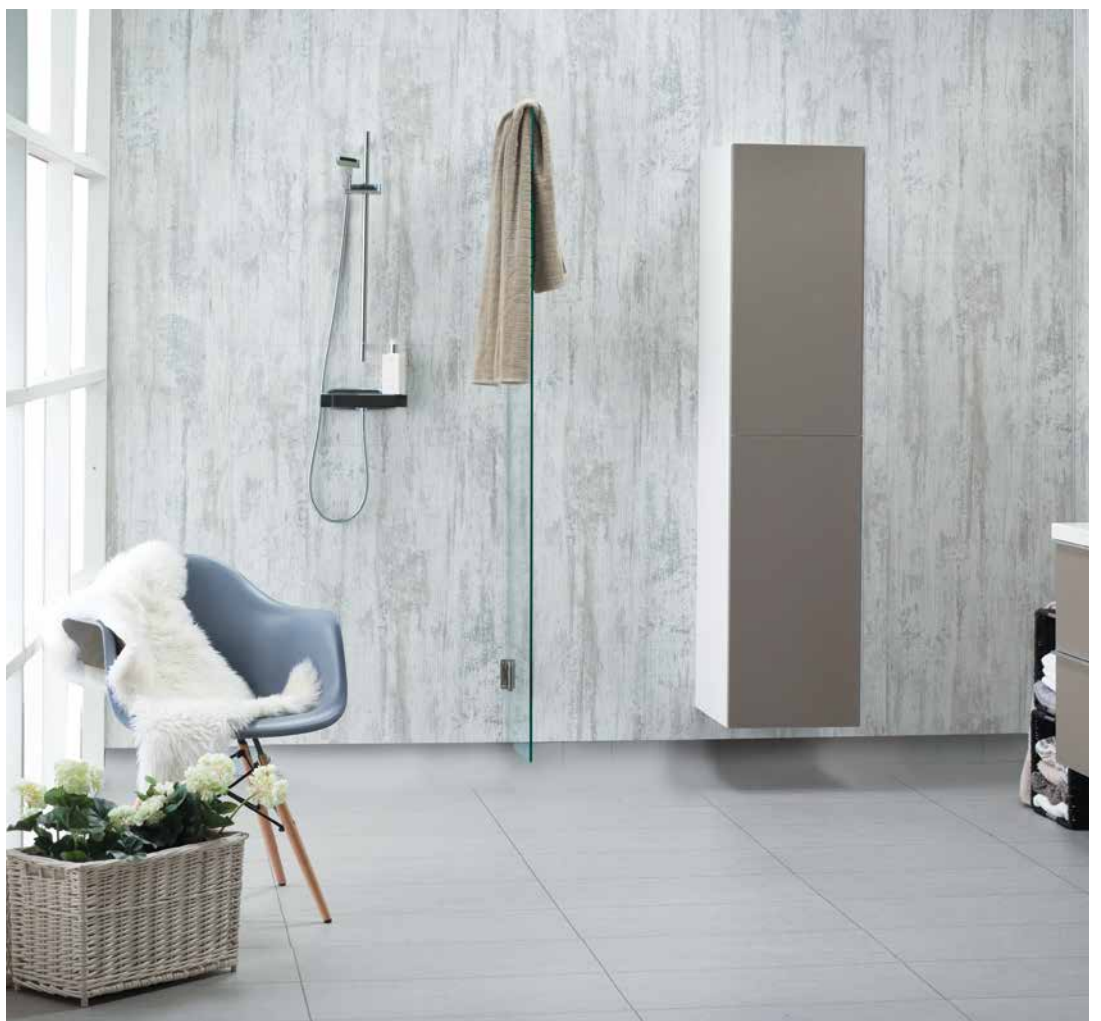




Fibo | Projects

Private homes: Bathroom



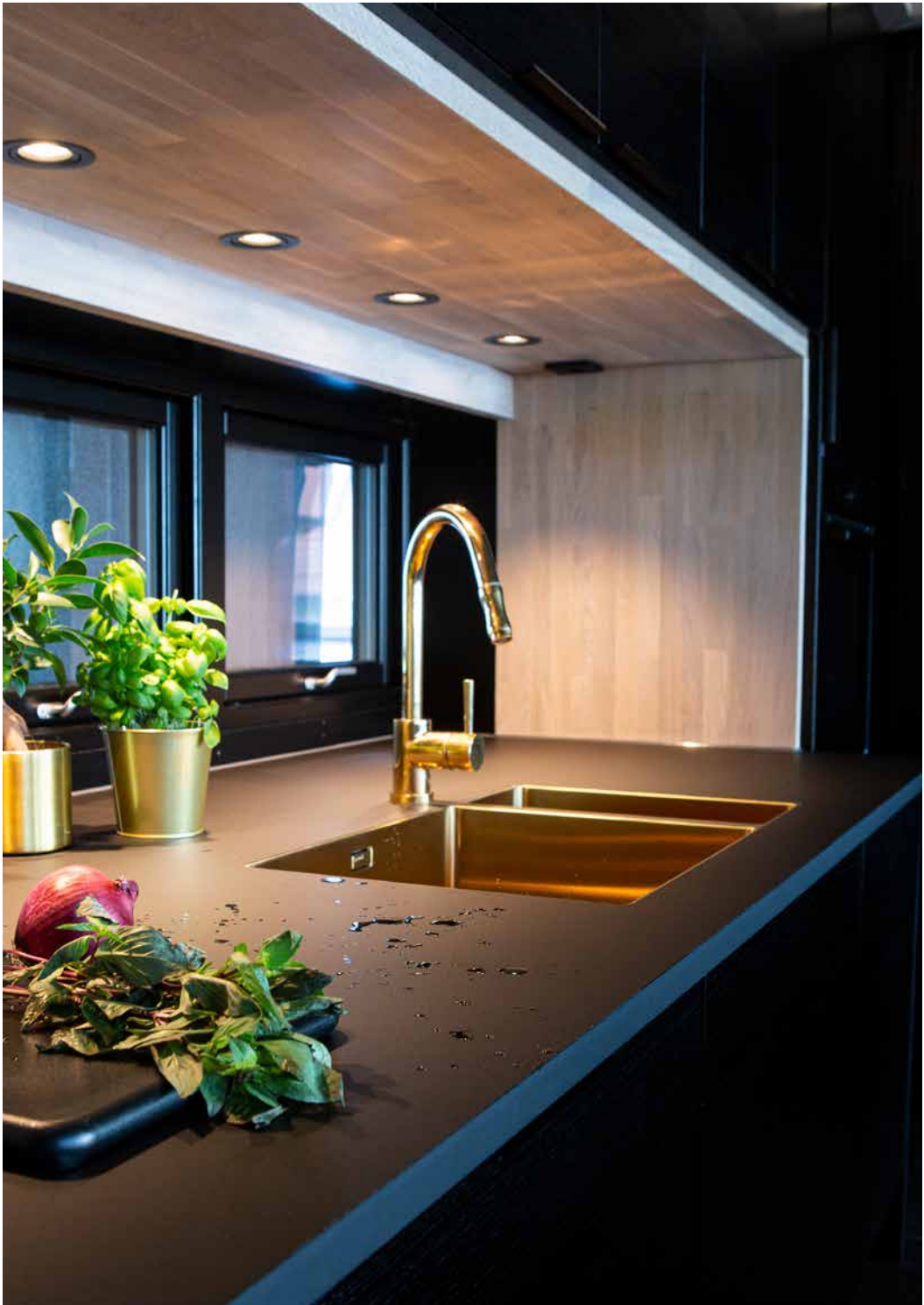


Fibo | Projects

Private homes: Kitchen

Xxx **Xxx** Xxx







A smart way to transform your wall

Find more on **fibosystem.com**

Fibo AS
Industriveien 2
N- 4580 Lyngdal
Norway

Tlf.: +47 38 34 33 00
E-post: info@fibosystem.com
www.fibosystem.com

© designbyfibo
designbyfibo

