

MINISPORT®



WARDROBE DOORS



FOLDING DOORS



STRAIGHT SLIDING DOORS



POCKET SLIDING DOORS



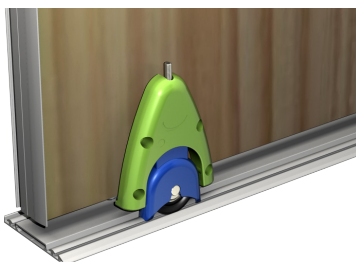
GLASS DOORS



WOOD FRAME WINDOWS



Systems for wardrobe doors



For panel from 12 to 19 mm thick

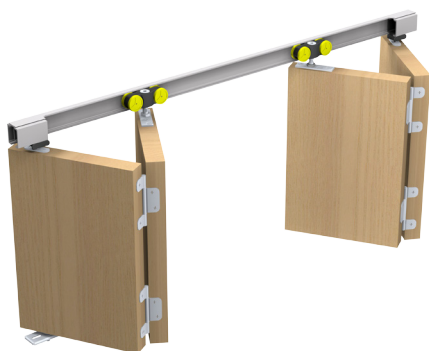
PICOSTAR®:

High quality product designed for wardrobes and cupboards.

- **QUALITY:** The upper guide and the rollers are equipped with ball bearings: smooth and silent motion
- **DESIGN:** Reversible upper track: one curved face and one straight face
- **SECURITY:** Rollers fitted with antiderailing system

DOOR WEIGHT	UP TO 55 kg
TRACK	ALUMINIUM
MOVEMENT	STRAIGHT

Systems for folding doors



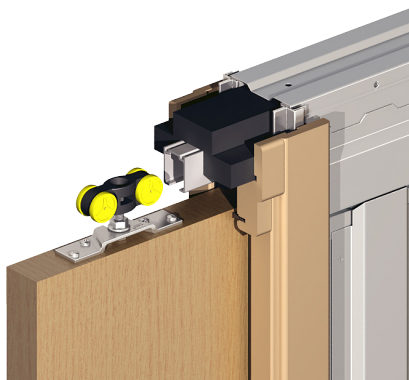
TANGO®:

Sliding-folding system for partition doors or wardrobe doors.

- **APPLICATION:** for 2 or 2 + 2 panels
- **DESIGN:** no bottom track (no guide) and small gaps
- **PRACTICAL:** Easy to install and to operate

DOOR WEIGHT	40 kg (per panel)
TRACK	ALUMINIUM (SAF)
MOVEMENT	FOLDING

Systems for pocket doors



SAF-INSIDE®:

System including the metal cage with the ALUMINIUM track and accessories.

- **SPACE SAVING:** Ideal to optimize floor and wall space
- **SILENT:** Our new rollers have been designed and tested to offer and guarantee a silent and smooth movement
- **CONVENIENT:** adjustable stop device holding the door in open or close position.

DOOR WEIGHT	UP TO 80 kg
TRACK	ALUMINIUM
MOVEMENT	STRAIGHT

Synchronised system up to 2 or 3 panels



SAF TELESCOPIC®:

Systems for telescopic sliding doors up to 80 kg and 120 kg per door on an aluminium track

- For openings up to 6 m.
- Seamless finish: no floor guide rail - doors stored in a stacking area
- High-end system: hangers guaranteed for 100,000 cycles
- Reinforced pulley/belt-operated synchronisation closed position.

DOOR WEIGHT	UP TO 120 kg
TRACK	ALUMINIUM
MOVEMENT	STRAIGHT

Systems for straight sliding doors



SAF®:

Sliding system in **ALUMINIUM** for interior applications with a top quality finish.

- **AESTHETIC:** the clip-on fascia entirely hides the system
- **SILENT:** our new rollers have been designed and tested to offer and guarantee a rolling comfort
- **COMFORTABLE:** hydraulic door closer stop
- **CLEVER:** Rollers equipped with a ball joint that improves the robustness of the system

DOOR WEIGHT	40 - 80 - 120 kg
TRACK	ALUMINIUM
MOVEMENT	STRAIGHT

SAF-CLIP®:

Systems for on the wall fixing doors with wooden pelmet.

- **EASY TO INSTALL:** Kits for standard doors from 700 to 1000 mm. width
- **DESIGN:** wooden assembled clip-on fascia for a perfect finish

DOOR WEIGHT	80 kg
TRACK	ALUMINIUM
MOVEMENT	STRAIGHT

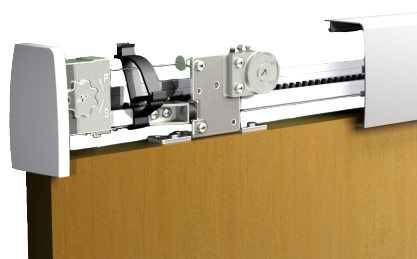
STARAL®:

Sliding system with **ALUMINIUM** for heavy doors.

- **NOISELESS:** rollers fitted with nylon wheels mounted on ball bearing
- **AESTHETIC:** rollers have been designed to reduce the gap between the top of the door and the bottom of the track
- **ROBUSTNESS:** rollers are equipped with stainless steel framing

DOOR WEIGHT	200 - 600 kg
TRACK	ALUMINIUM
MOVEMENT	STRAIGHT

Systems for persons with reduced mobility



SOFTCLOSE®:

Self closing sliding system

- **CONVENIENT:** 5 kits ready to fit for widths of openings from 700 to 1450 mm.
- **DESIGN:** perfect finish with anodized aluminium pelmet (with end caps)
- **SILENT:** integrated hydraulic brake for a soft and silent closing
- **COMFORTABLE:** adjustable closing speed

DOOR WEIGHT	UP TO 80 kg
TRACK	ALUMINIUM
MOVEMENT	STRAIGHT



SAF-POWER®:

Motorized systems for sliding doors.

- **CONVENIENT:** 18 kits ready to fit for widths of openings from 675 to 2000 mm (Motorization on left or right position).
- **DESIGN:** perfect finish with anodized aluminium pelmet (with end caps)

DOOR WEIGHT	UP TO 80 kg
TRACK	ALUMINIUM
MOVEMENT	STRAIGHT

Folding system for wood framed windows



OPENTEC FWF100®:

Folding system for creating a tightly sealed wood-framed picture window

- Convenient to use: picture window slides easily.
- 2 solutions for the threshold:
 - flush-mounted (PRM)
 - floor-mounted (with thermal seal + PRM)
- Choice of structural materials: anodised aluminium and stainless steel.
- 2-point locking system suitable for the product.
- Standard plans for making tightly sealed leaves can be provided on request.

Max. weight per panel: 100 kg

Max. opening dimensions: 17 x 3.5 m

Number of panels: 3 to 15 (7+8)

Max. width per panel: 1100 mm

Panel thickness: 83 to 100 mm

For:

restaurants, bars, hotels, patios, villas, etc...



SLIDSOFT:

Online configurator

*Provides the component list
and details
as well as panel dimensions*

Systems for glass doors



Mantion offers you a wide range of sliding systems for glass doors

MAGGLASS: system for 8, 10 or 12 mm glass doors

SAFGLASS: system for 8, 10, 12 or 15 mm glass doors equipped with damper closer system and pelmet for the track - Manual or motorized movement

INTEC: system for 8 or 10 mm glass doors - The clamp is integrated in the track integrated door closing damper - Possibility to add a fixed glass partition

TUB-DESIGN: system with apparent mechanism (round track)

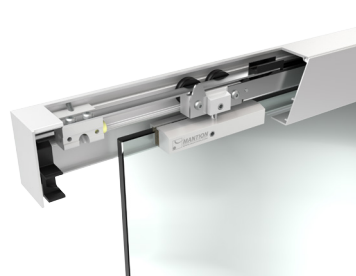
MAGGLASS®



SAFGLASS®



INTEC®



TUB-DESIGN®

