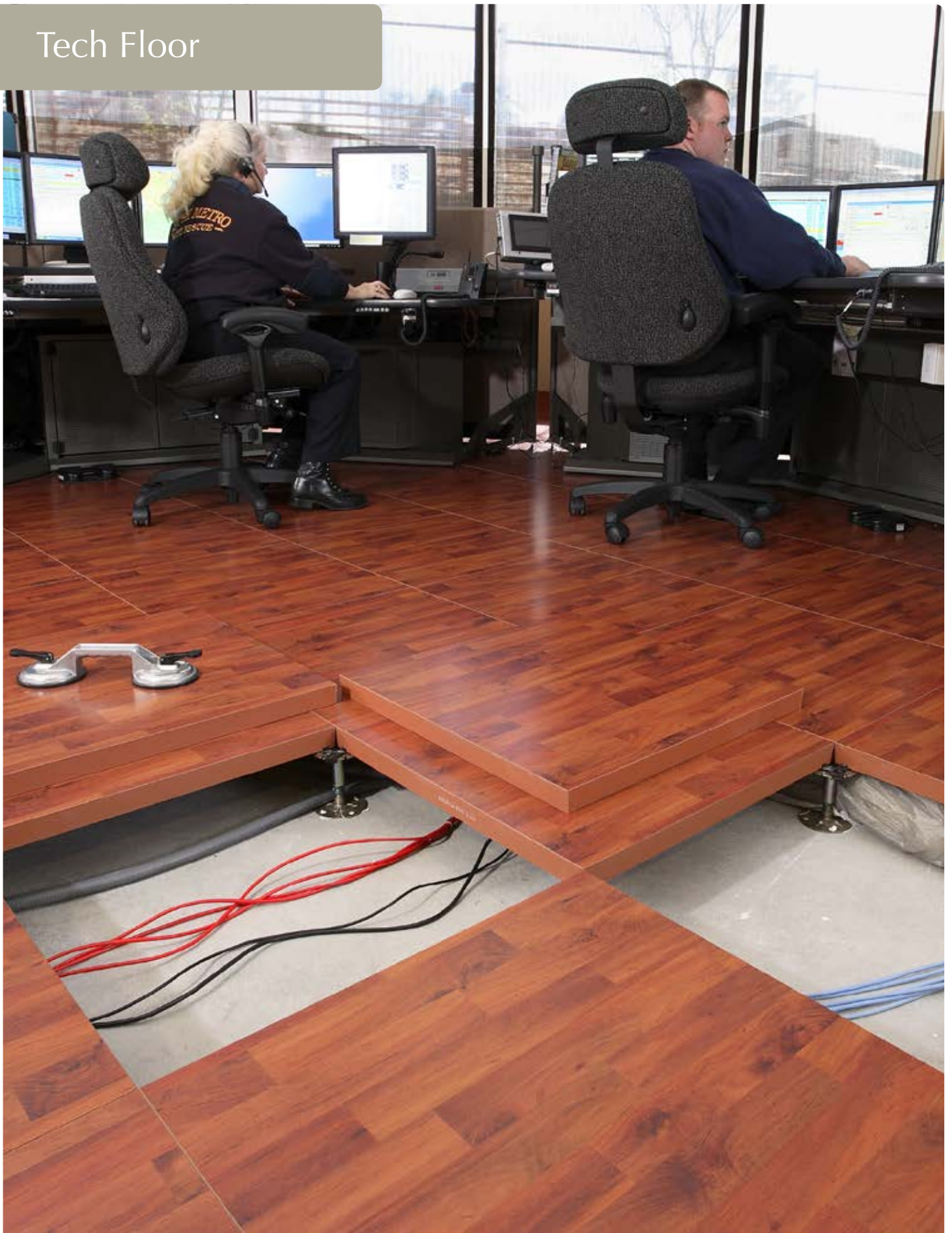


Tech Floor



A flexible, economical office floor



The WBOC Newsplex Studio in Salisbury, Maryland USA uses about 850m² of Tech Floor with Alder laminate finish.

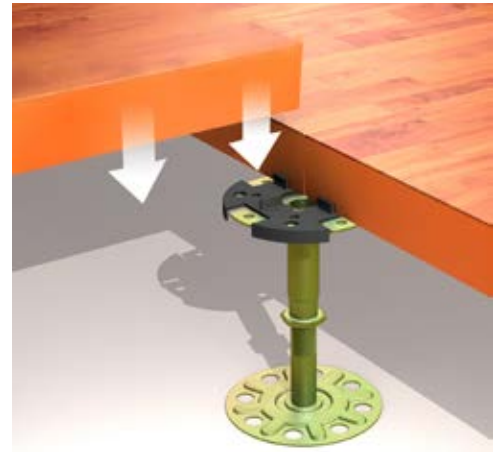
Raised access flooring system

Engineered for applications where changing technology requires future modifications, Bergvik's Tech Floor is an excellent solution for underfloor electrical, plumbing, cable and HVAC installations, providing stability, strength and personal safety for floor heights from 38 to 350 mm. For floor heights over 350 mm, we recommend the Iso Floor system, which provides total stability even with the floor panels removed.

Tech Floor's unique solid panel construction features tapered edges which assure that all panels stay flush. The thin ABS plastic edge trim fully protects the edge of the panel surface while presenting a smooth profile.

The Tech Floor structure consists of steel pedestal supports and adjustable pedestal heads with semi-conductive pads that lock the floor panels and pedestals jointly into position. For additional lateral support or increased rolling loads, drop-in or bolted type stringers mounted between pedestals are available.

Trust the Bergvik name for high quality and dependability!



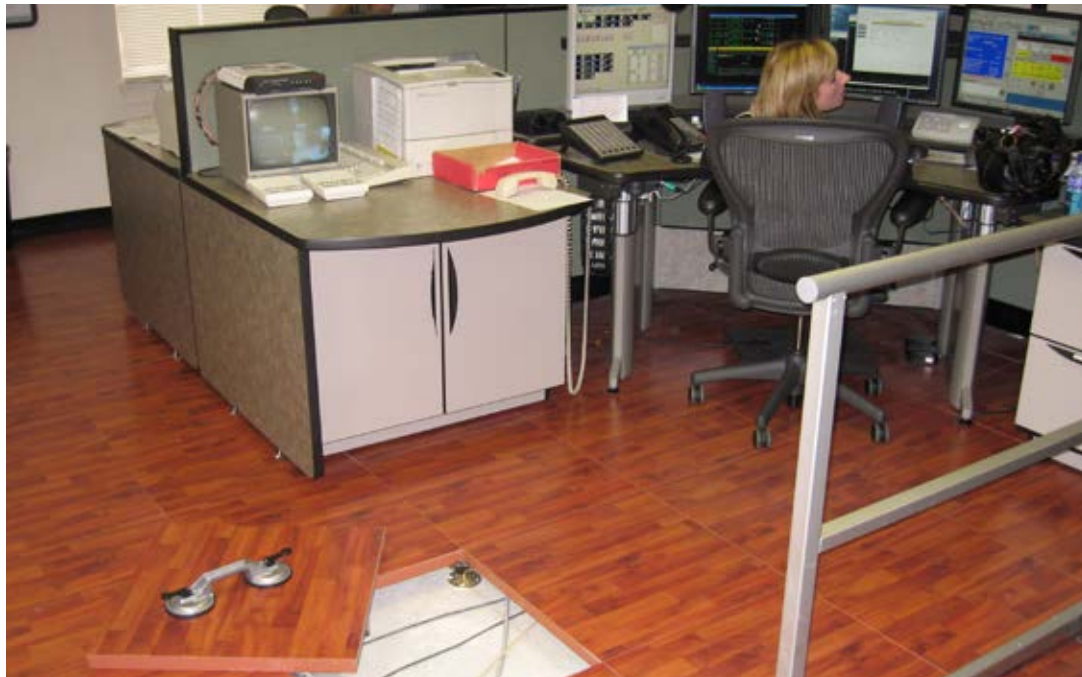
Tech Floor panels

Bergvik's standard woodcore panel is made from 38mm high-density, V20 or V313 quality particle board with a superior e-module. Surface finishes include warm wood decors, a versatile granite pattern, as well as a bare laminate intended for carpet overlay.

Highly resistant to harsh chemicals, even battery acid, the Bergvik laminate is applied directly to the panel, without using glue, which is known to cause delamination. Difficult stains such as cable marks, paint or ink may be quickly removed with rubbing alcohol.

The Bergvik laminate finish is extremely wear resistant and easy to clean, it is so durable that cumbersome chair mats are not needed. Chairs with casters for hardwood floors glide smoothly around work stations.

Panels are available in standard 600x600 mm squares, but can also be fabricated in custom sizes if required. Best of all, the floors carry an unrivaled 5-year warranty.



Technical data

FLOOR SYSTEM IN GENERAL

Uniform distributed load (UDL)	12-35 kN/m ² .
Point Load	3-7 kN.
Finished floor height (FFH)	70-350 mm.
Adjustment to floor	± 12 mm from floor heights of FFH 130-180 mm, and ± 25 mm from floor heights of FFH 200-355 mm.
Grounding	carried out by electrical contractor according to the project specifications.

STANDARD FLOOR PANEL SPECIFICATIONS

Material core	38 mm thick, high density V20 or V313 quality particle board.
Standard dimensions	600x600 mm.
Standard surface finish	Bergvik Direct Laminate
Color fastness	6 according to EN 438-2:16 1991.
Weight	10 kg for panel 600x600 mm.
Impact resistance	meets with DIN68751 specifications.
Flame spread	20 (class 1) in accordance with ASTM E84 or NFPA 266.
	Bfl-s1 according to EN 13501-01

For accessories please consult your local Bergvik supplier.

Iso Floor



Raised floor for data centres and power distribution rooms with unique flexibility

HiFlex Floor



High-built power distribution floor as an alternative to concrete with pre-casted hole slots.

Seismic Floor



Bergvik's seismically secure raised floor that will protect critical electrical equipment.

Tech Floor



An economical standard grid floor system for installation in offices, communication centres etc.

Iso Flex-Grid



A load-bearing structural ceiling system that is both a dropped ceiling and a support grid in one cost effective solution.