

# FSB plug-in handles

for timber and metal windows



**What a difference less can make!** With its radically pared-down rose, the FSB plug-in handle is ideal for nearly any window profile – whether timber or metal. There is nothing reductionist about the range of variants available, though: our plug-in handle, winner of the Iconic Award 2018, is available in any of 37 different designs in Aluminium, Stainless Steel, Brass and Bronze.



# The new FSB plug-in handle: Minimalism for windows



**Now, anyone for whom less is more can finally enjoy the visual allure of slimline plug-in handles that sit well on both aluminium and timber profiles.**

The new FSB plug-in handle aids correct operation of the window by both tactile and acoustic means. The window can be heard and felt to slot into position at 90° intervals when opened, closed and tilted.

How FSB plug-in handles with round roses are assembled does not depend on the window drive mechanism, as assembly is via a deadlock in the profile.

The option of fitting plug-in handles to timber frames is new to the market. Assembly in such cases merely involves ordering an additional adaptor (Product Code 03 0401 00000) that facilitates deadlocking.

All FSB window handles fitted with ball catches – and hence also its plug-in handles – are engineered to deliver 25,000 operations/150,000 click-stop events (180° turn-and-tilt cycles), earning them the highest quality rating of 5/180 under DIN EN 13 126-3. This standard defines requirements for window handles that are designed to ensure consistent quality and fitness for function over many years. The RAL Quality Assurance Association has re-aligned its requirements with the criteria set forth in DIN EN 13 126-3, meaning that hardware merely now needs to endure 10,000 180° tilt-turn cycles to qualify for the RAL quality kitemark.

## Important notes

For metal profiles: the borehole layout needed for plug-in handles must accord with the window profile selected.

For timber profiles: a depth of 9.3 mm in the timber profile is required for the fixing rose.

## Lockable FSB plug-in handles

A new solution involving a lock cylinder that can be comfortably operated by key from the front is of ideal assistance in implementing security schemes for burglar-resistant windows in the form of lockable window handles. It is possible using the lock cylinder to additionally fit a selection of the FSB plug-in handles shown on Pages 9 and 10 to burglar-resistant windows. Thus functional add-ons can be executed in the same style and material as your favoured handle! It goes without saying that certification to the RAL quality standard RAL-GZ 607/9 and to DIN EN 13 126-3 respectively is pending for these solutions, too, and that they are wholly suitable for burglar-resistant windows of classes RC 1 to RC 6 as per standards DIN EN 1627 to 1630.

## FSB plug-in handles at a glance

- suitable for metal and timber profiles
- variable spindle projection 24–38 mm
- round rose
- assembly not dependent on window drive
- secure clamping mechanism
- concealed fixing
- tested to DIN EN 13 126-3
- supplied in all FSB materials
- identical female handle for plug-in handles as for door levers
- also available as a lockable variant

Numerous merits for the new FSB plug-in handle can be downloaded on the web at

[www.fsb.de/pluginhandle](http://www.fsb.de/pluginhandle)

## Product Codes for FSB plug-in handles

34 .... 71101 (round rose)  
Plug-in handle,  
heavy-duty variant for metal profiles,  
rose surface-mounted on profile,  
with ball catch, fatigue resistance rating  
5/180 as per DIN EN 13 126-3  
– concealed fixing  
– rose dimensions Ø 30 mm  
– 7 mm □-spindle, length variable  
24–38 mm (standard version supplied)

03 0401 00000  
Fixing rose for assembly on timber profiles

34 .... 71423 (round rose, variable spindle  
projection 29–34 mm)  
34 .... 71424 (round rose, variable spindle  
projection 34–39 mm)

lockable plug-in handle,  
heavy-duty variant for metal profiles,  
rose surface-mounted on profile,  
with ball catch, fatigue resistance rating  
5/180 as per DIN EN 13 126-3 pending  
– concealed fixing  
– rose dimensions Ø 30 mm  
– 7 mm □-spindle, length variable  
29–34 resp. 34–39 mm (standard  
version supplied)

## Classification codes as per DIN EN 13 126-3

For plug-in handles with click-stop  
mechanism

2	5/180	–	0	1	4	0/0	3/C1	–
---	-------	---	---	---	---	-----	------	---

For lockable plug-in handles\*\*

2	5/180	–	0	1	3*	2/3	3/C1	–
---	-------	---	---	---	----	-----	------	---

\* Oberflächen Messing, Bronze, Klasse 0

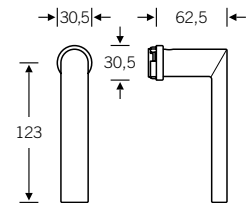
\*\* Testing and certification being conducted  
in the 3rd quarter of 2018. Certificates  
planned for the 4th quarter of 2018.

# Plug-in handle for metal profiles with round rose



34 .... 71101

Plug-in handle for metal profiles,  
with round rose

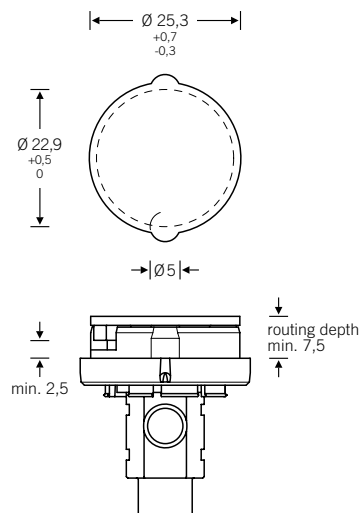
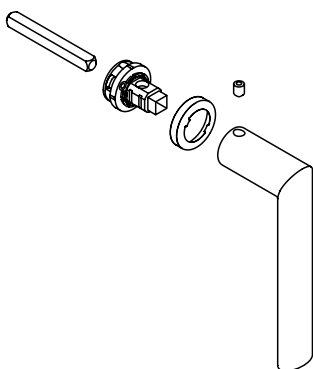


with plug-in handle  
34 1108

## Please note:

**The borehole layout needed for plug-in handles must accord with the window profile selected (see drawing)**

- concealed fixing
- clamping mechanism
- the cover rose clips onto the baserose
- 7 mm □-spindle
- rose with 30 mm diameter
- fatigue resistance rating 5/180 as per DIN EN 13 126-3
- adaptor system
- variable spindle projection 24–38 mm





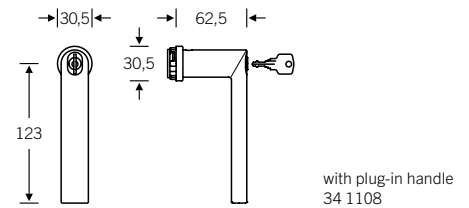
# Lockable plug-in handle for metal profiles with round rose



## 34 .... 714

34 .... 71423 (variable spindle projection  
29–34 mm)

34 .... 71424 (variable spindle projection  
34–39 mm)

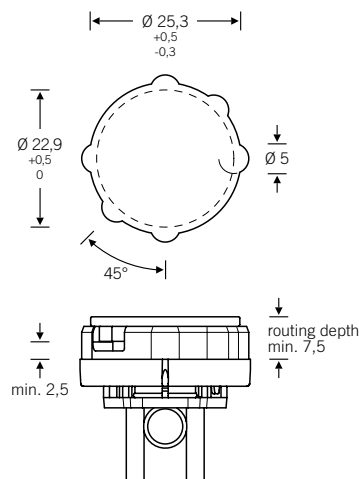
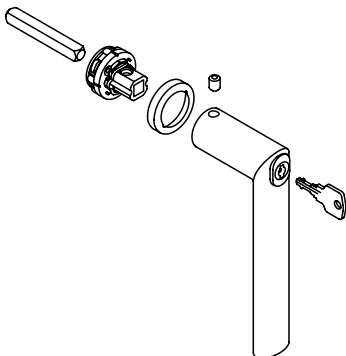


### Please note:

**The borehole layout needed for plug-in handles must accord with the window profile selected (see drawing)**

- concealed fixing
- clamping mechanism
- the cover rose clips onto the baserose
- 7 mm □-spindle
- rose with 30 mm diameter
- fatigue resistance rating 5/180 as per DIN EN 13 126-3 pending
- adaptor system
- variable spindle projection 29–34 mm
- variable spindle projection 34–39 mm

Models featuring a lock cylinder can also be fitted to burglar-resistant windows. Thus functional add-ons can be executed in the same style and material as your favoured handle! The following models are available as lockable variants with 100 Nm resistance to forcing: 1001, 1076, 1078, 1093, 1108, 1144, 1222, 1244





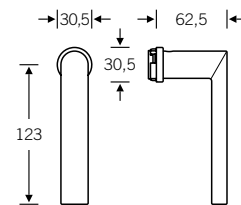


# Plug-in handle for timber profiles with round roses



## 34 .... 71101

Plug-in handle for timber profiles,  
with round rose,  
in combination with a fixing rose  
03 0401 00000

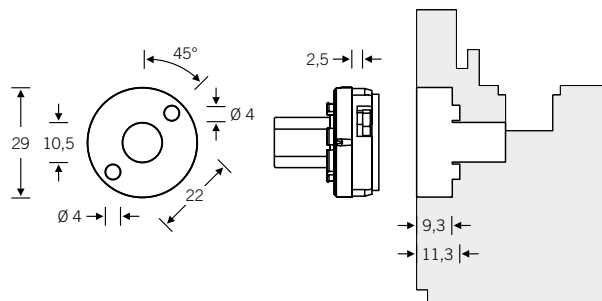
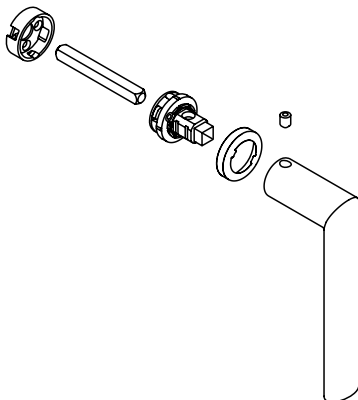


with plug-in handle  
34 1108

### Please note:

**For timber profiles: a depth of 9.3 mm in the timber profile is required for the fixing rose.**

- concealed fixing
- clamping mechanism
- the cover rose clips onto the baserose
- 7 mm □-spindle
- rose with 30 mm diameter
- fatigue resistance rating 5/180 as per DIN EN 13 126-3
- adaptor system
- variable spindle projection 24–38 mm









# Plug-in handles



## Product Chart

34 1001  \*



34 1003  



34 1004   



34 1005  



34 1012 





34 1015   





34 1023    



34 1025  





34 1035  





34 1058   



34 1070  



34 1075  




34 1076     \*





34 1077 



34 1078   \*



34 1093   \*



34 1102    



34 1106    



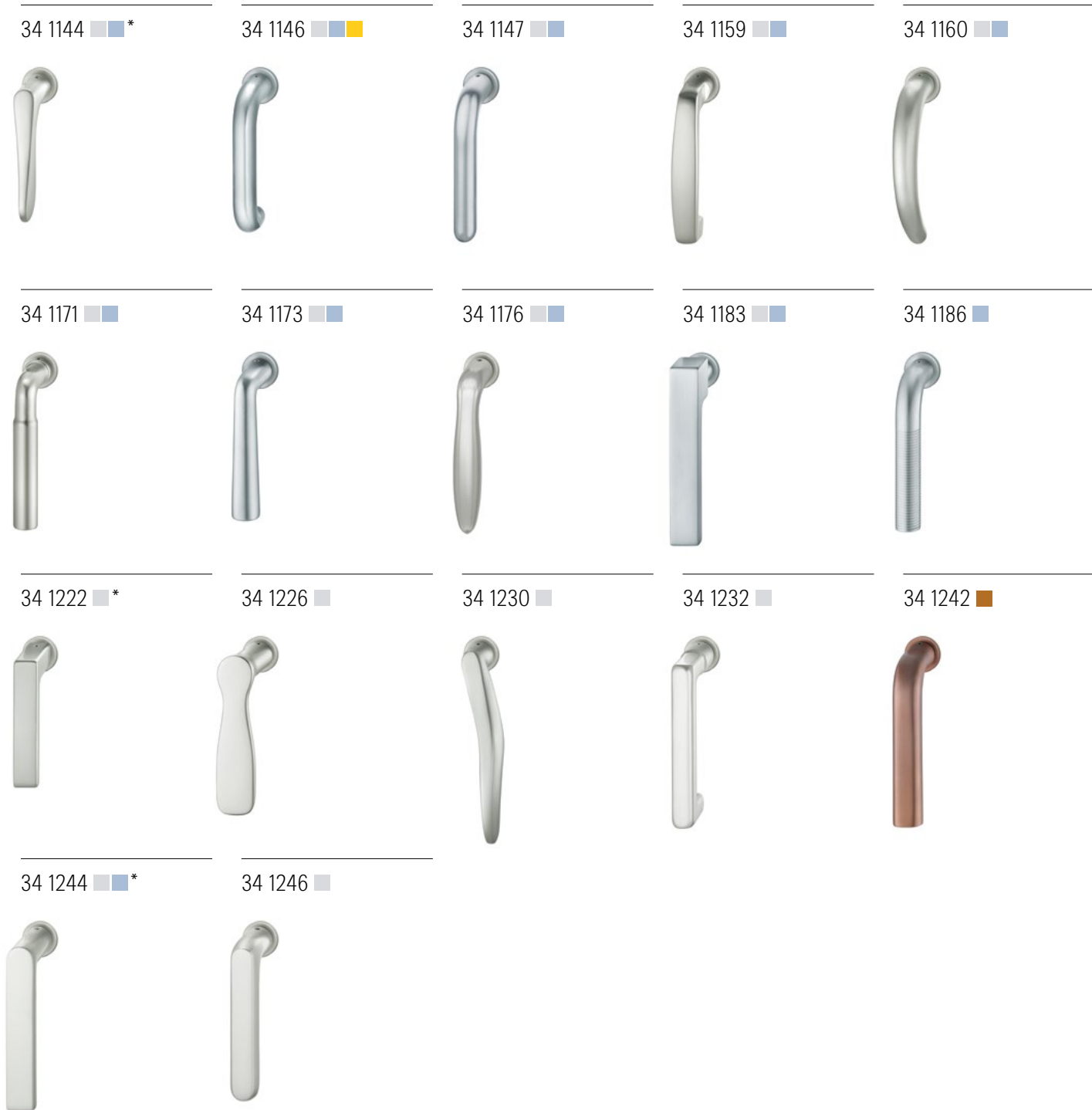
34 1107  



34 1108   \*



\* can be supplied as a lockable variant



\* can be supplied as a lockable variant



Franz Schneider  
Brakel GmbH + Co KG

Nieheimer Straße 38  
33034 Brakel  
Germany

Phone +49 5272 608-0  
[www.fsb.de](http://www.fsb.de) · [info@fsb.de](mailto:info@fsb.de)