

FSB plug-in handles for doors and windows

Technical Details

Technical Details

Plug-in handles for doors and windows

FSB plug-in handles for internal doors

- easy to assemble
- door thicknesses 39–48 mm
- can be combined with any of 53 door-lever models, 39 possible models as plug-in handles for both doors and windows
- available in Aluminium, Stainless Steel, Brass and Bronze
- available with or without key roses (warded lock, PC, WC)
- rose dimensions Ø 30 mm
- 7, 8 and 8.5 mm spindles
- female handles on either side, adaptor system
- positively interlocking spindle connection
- grub-screw drilling at bottom
- scope for offsetting play between lock and fitting
- Class 4 testing to EN 1906 pending
- ability to withstand one million fatigue test cycles pending
- testing for PIV certification pending

Plug-in handles for windows with timber or metal profiles

- rose surface-mounted on profile
- with ball catch
- fatigue resistance rating 5/180 as per DIN EN 13 126-3
- clamping mechanism
- the cover rose clips onto the base roset
- 7 mm □ spindle
- rose dimensions Ø 30 mm
- concealed fixing
- length variable from 24–38 mm (standard version supplied)
- lockable: spindle projection variable from 29–34 mm or 34–39 mm respectively (standard version supplied)
- adaptor system

03 0401 00000 0400

Fixing rose for assembly on timber profiles

03 0401 00001 0400

Accessory bag for fitting handles to timber windows (lockable)

Classification codes as per DIN EN 13 126-3

For plug-in handles with click-stop mechanism

2	5/180	–	0	1	4	0/0	3/C1	–
---	-------	---	---	---	---	-----	------	---

For lockable plug-in handles

2	5/180	–	0	1	3*	2/3	3/C1	–
---	-------	---	---	---	----	-----	------	---

* finishes Brass, Bronze, Class 0

Technical Details

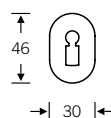
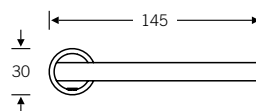
Plug-in handles for internal doors

15 1035 013..



15 1035 01302 (□ 8 mm)
15 1035 01304 (□ 8.5 mm)

Lever set with warded-lock roses

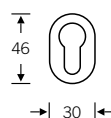
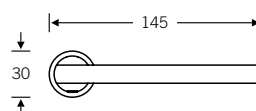


15 1035 013..



15 1035 01310 (□ 8 mm)
15 1035 01311 (□ 8.5 mm)

Lever set with PC roses

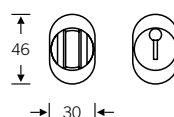
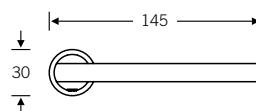


15 1035 019..



15 1035 01954 (□ 8/8 mm)
15 1035 01988 (□ 8.5/7 mm)

Lever set with WC roses



The differing variants available are set out on this page citing the example of the FSB 1035 model. All models covered in the "Plug-in handles for doors and windows" brochure can be supplied in these variants.

Dimensioned drawings of the various door-lever designs are to be found on pages 73–267 of FSB Manual 13.

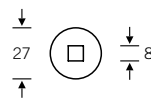
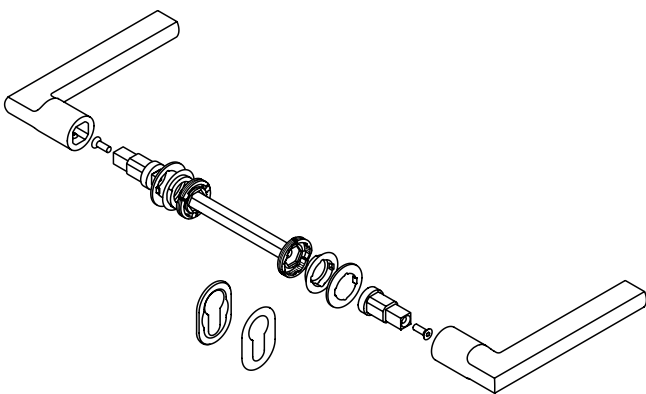
Technical Details

Plug-in handles for internal doors



Fitting the new FSB plug-in handle is a very straightforward affair: first the door drillings for the clamping roses are prepared to suit a diameter of either 26 or 27 mm. This can be performed under the CNC system or else manually with a key-hole saw obtainable from FSB (03 0416 01012 5000).

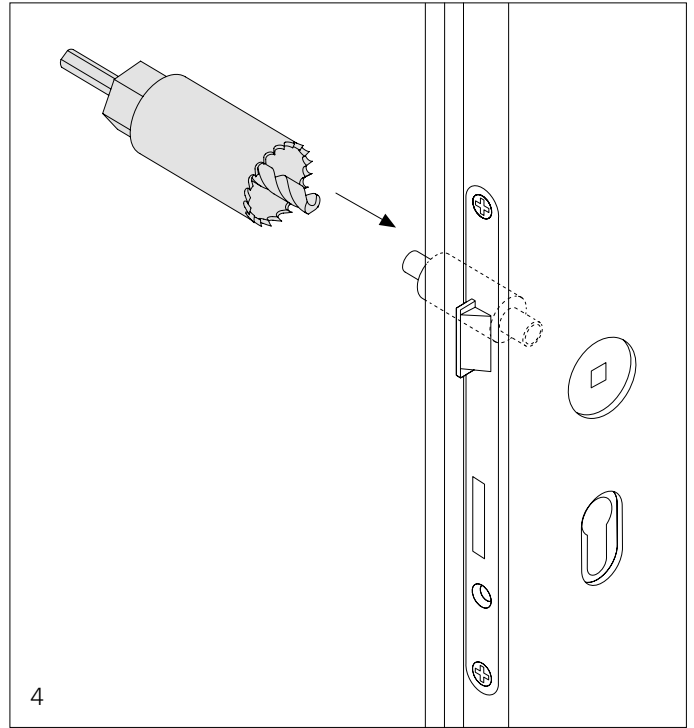
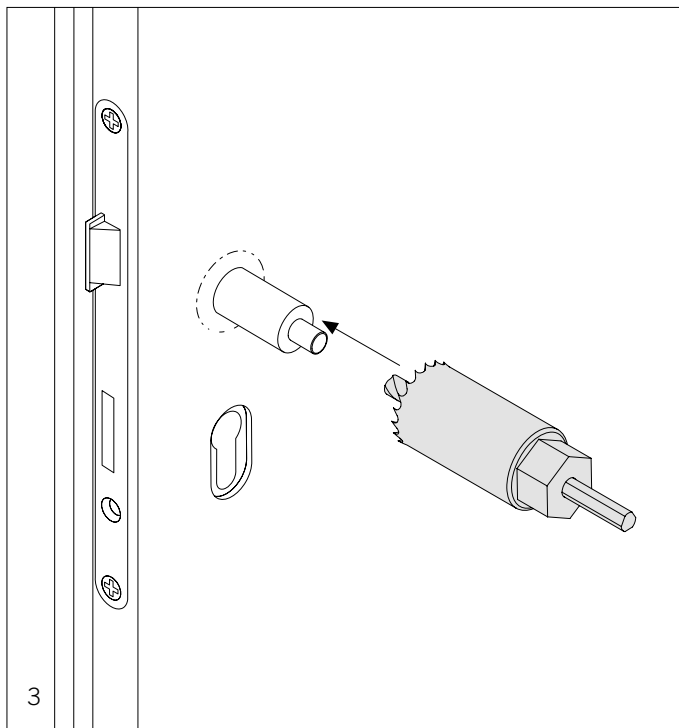
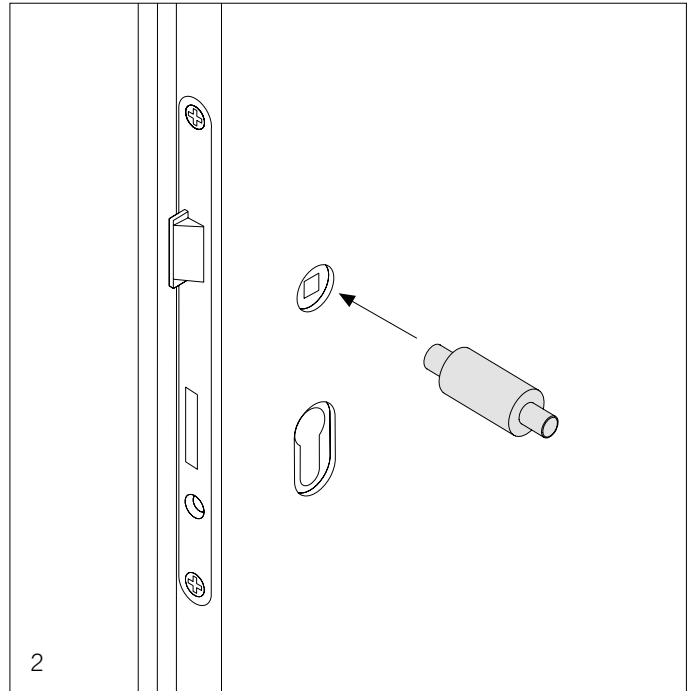
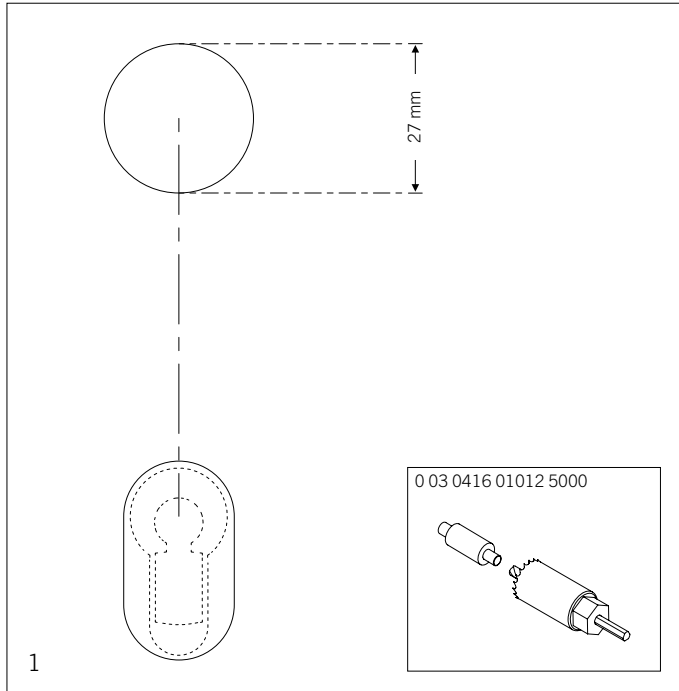
Companion key roses are aligned on the door with the aid of a template, whereupon the adaptors are slipped over the spindle running through the lock follower and firmly secured with screws. Once the cover roses have been slotted into place, the operation can be completed by plugging in the handles.



Keyhole saw 03 0416 01012 5000

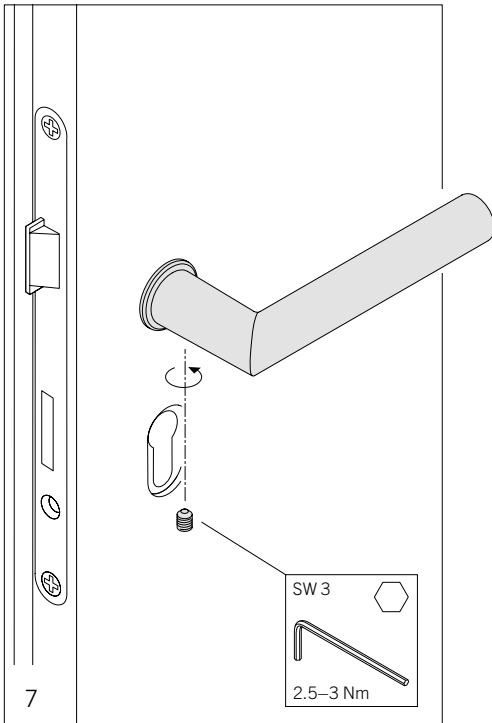
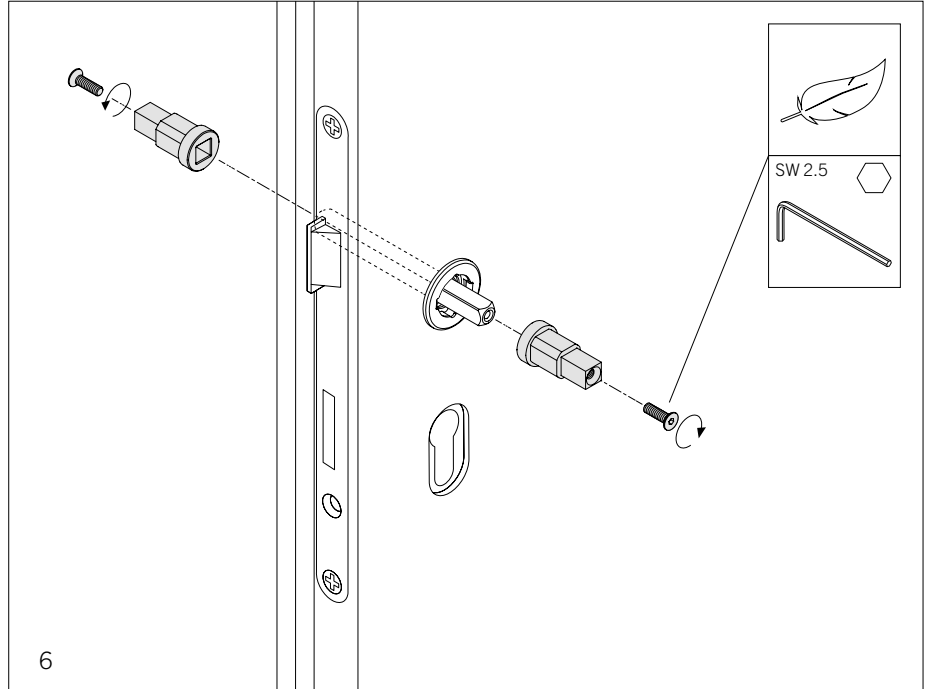
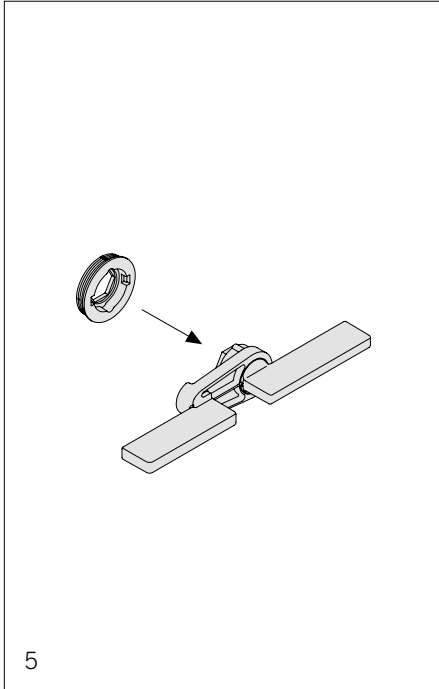
Technical Details

Plug-in handles for internal doors



Technical Details

Plug-in handles for internal doors



Technical Details

Plug-in handles for metal windows

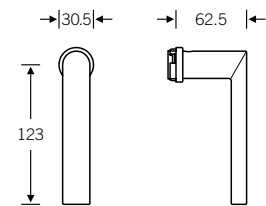


34 71101

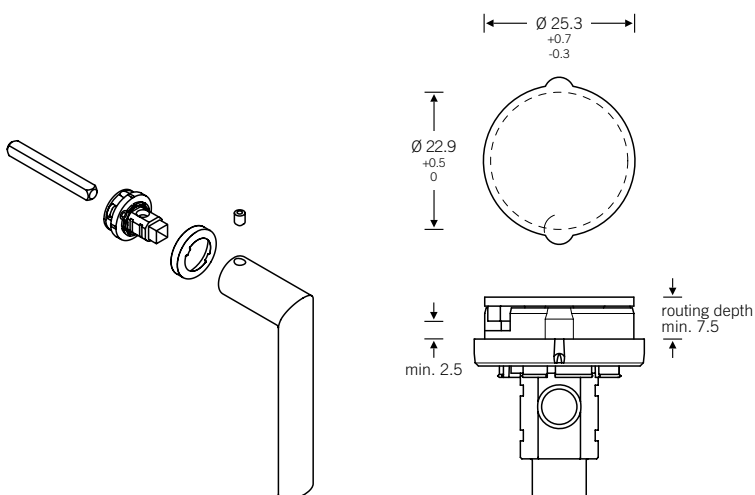
Plug-in handles for windows with metal profiles

Please note:

The borehole layout needed for plug-in handles must accord with the window profile selected.

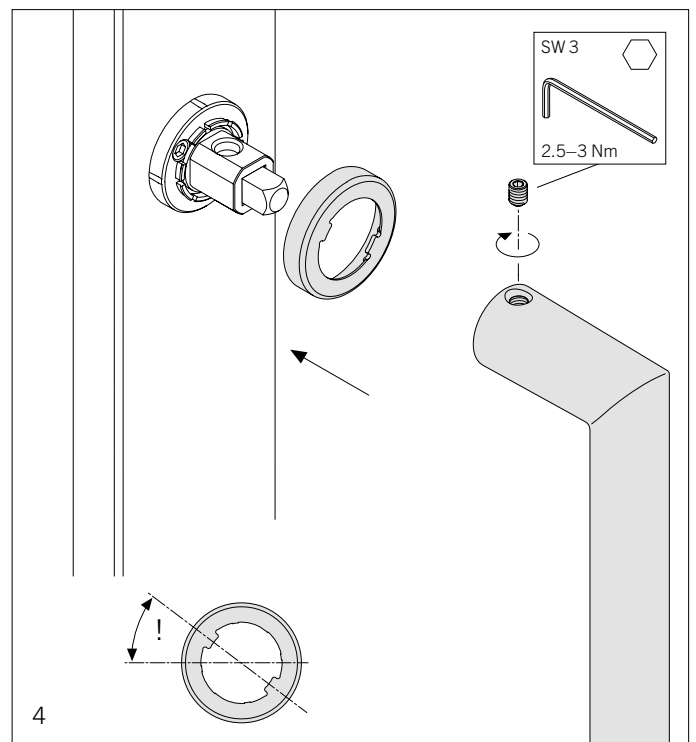
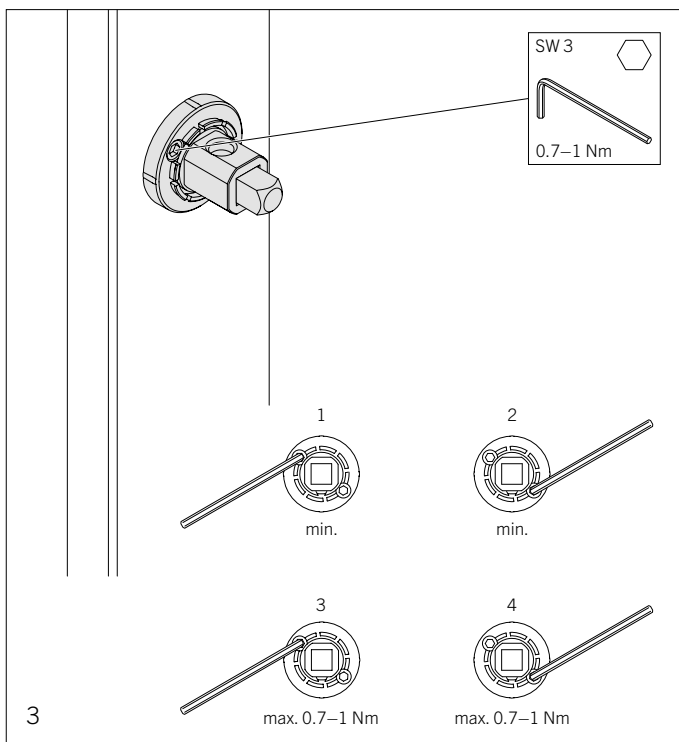
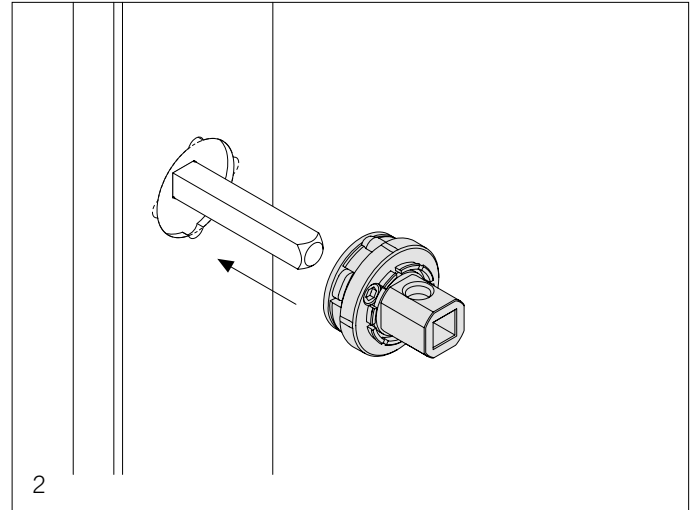
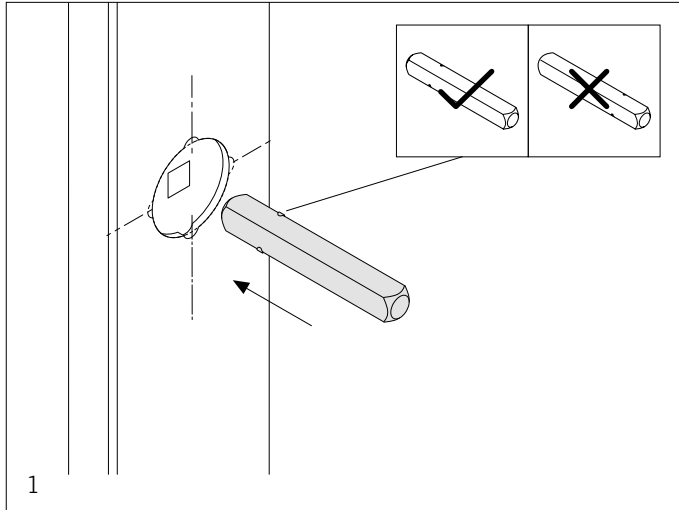


with plug-in handle
34 1108



Technical Details

Plug-in handles for metal windows



Technical Details

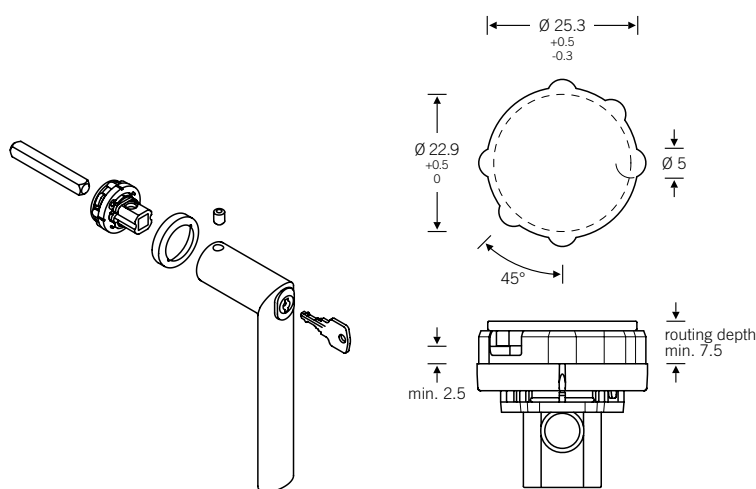
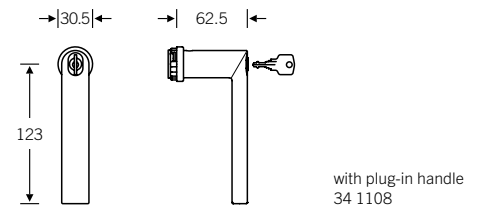
Plug-in handles for metal windows, lockable



34 71

- 34 71423 (spindle projection variable from 29–34 mm)
- 34 71424 (spindle projection variable from 34–39 mm)
- 34 71723 (push-button, spindle projection variable from 29–34 mm)
- 34 71724 (push-button, spindle projection variable from 34–39 mm)

Plug-in handles for windows with metal profiles, lockable



Please note:

The borehole layout needed for plug-in handles must accord with the window profile selected (see drawing).

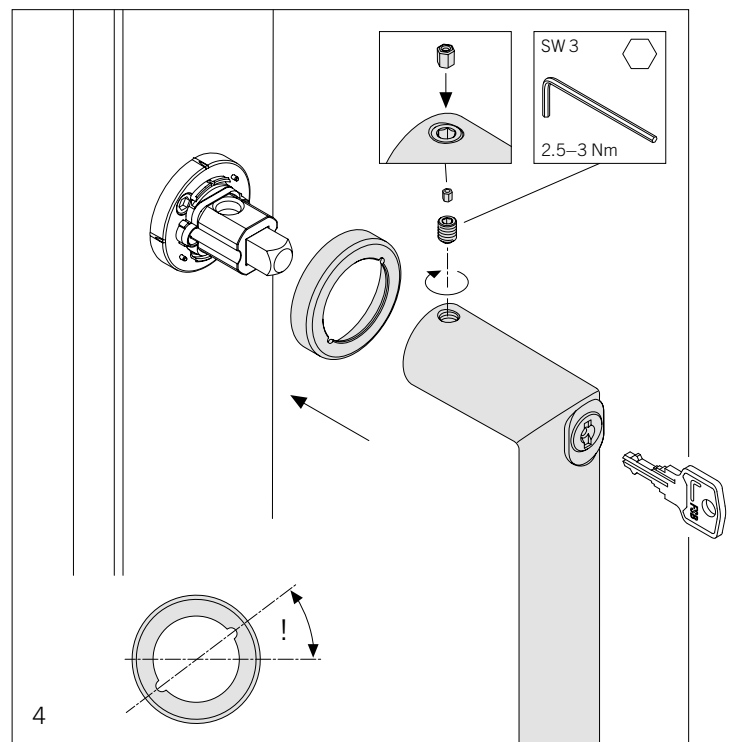
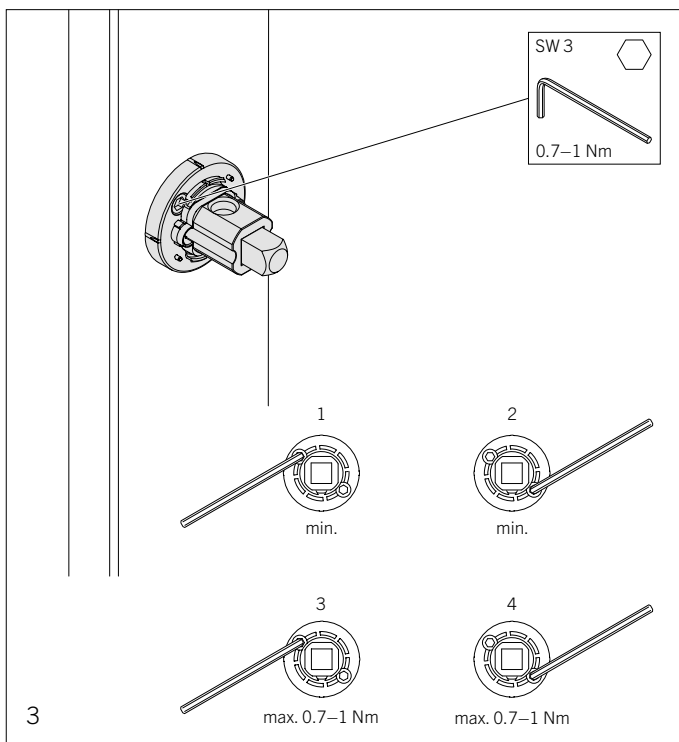
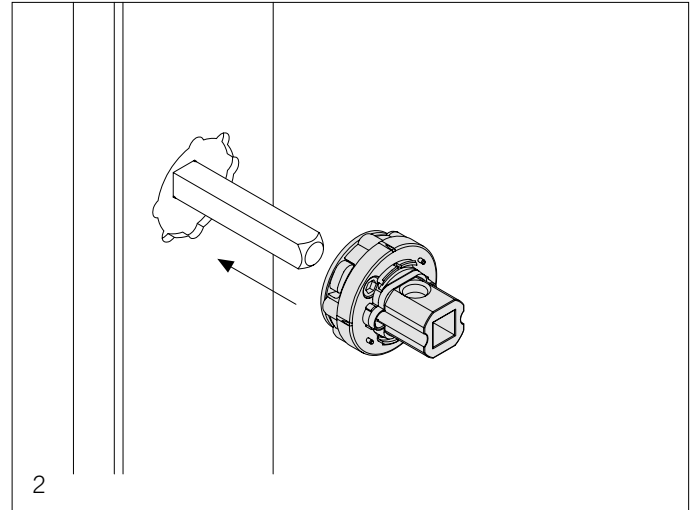
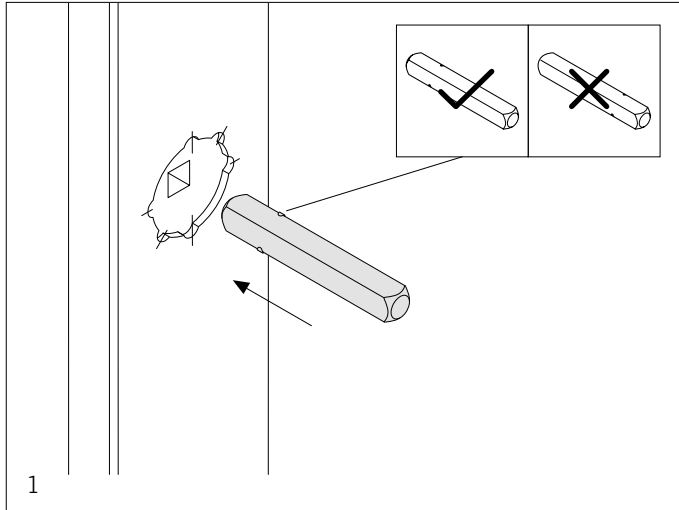
Models featuring a lock cylinder can also be fitted to burglar resistant windows. The following models are available as lockable variants with 100 Nm resistance to forcing: 1001, 1076, 1078, 1093, 1108, 1144, 1222, 1244

No “tilt-to-turn” action possible

Please note that it is only possible to rout out the recesses for FSB plug-in handle solutions using a CNC machining centre. High-precision routing-out data are to be found at www.fsb.de/cnc

Technical Details

Plug-in handles for metal windows, lockable



Technical Details

Plug-in handles for timber windows

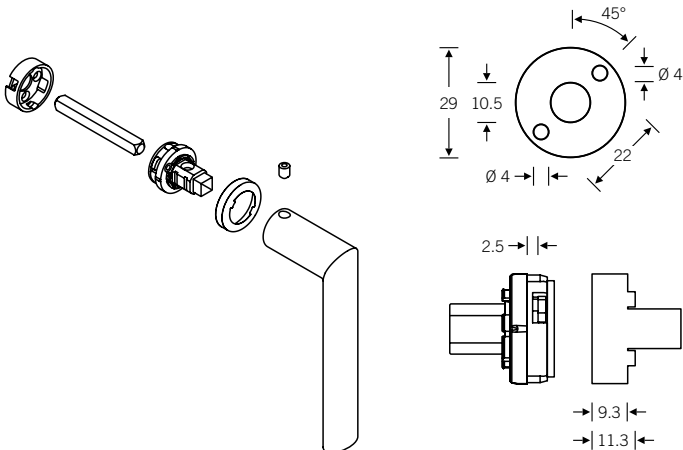


34 71101

Plug-in handle for windows with timber profiles in combination with a fixing rose 03 0401 00000 0400

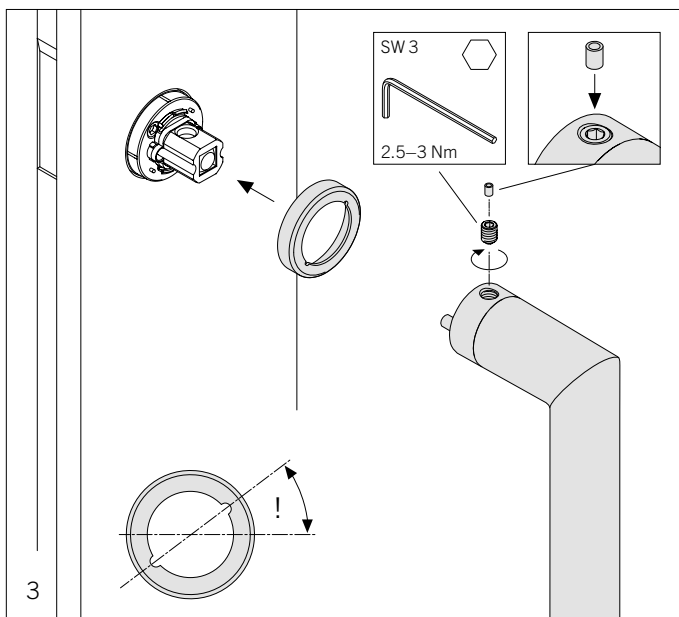
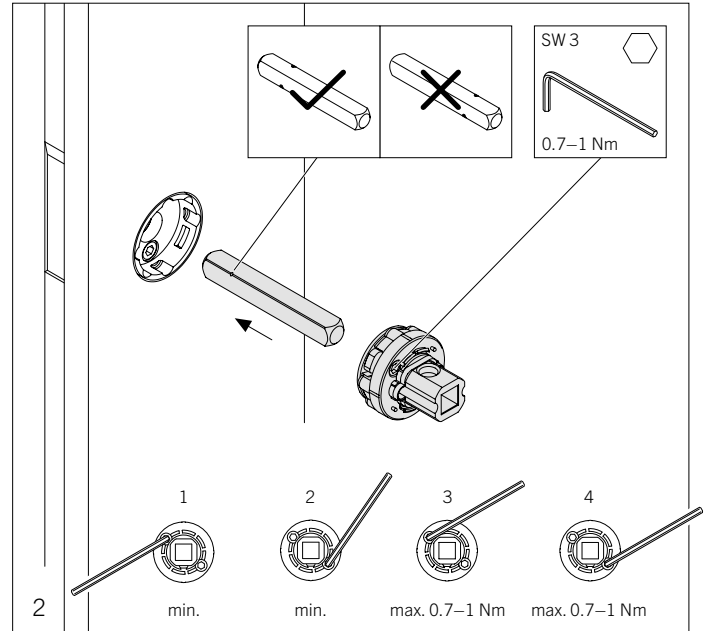
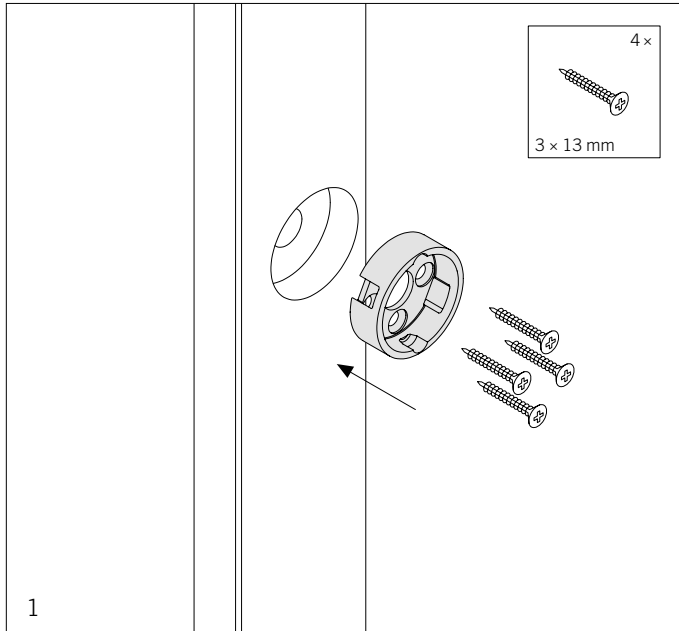


Please note:
A depth of 9.3 mm is required in the timber profile to accommodate the fixing rose.



Technical Details

Plug-in handles for timber windows



Technical Details

Plug-in handles for timber windows, lockable



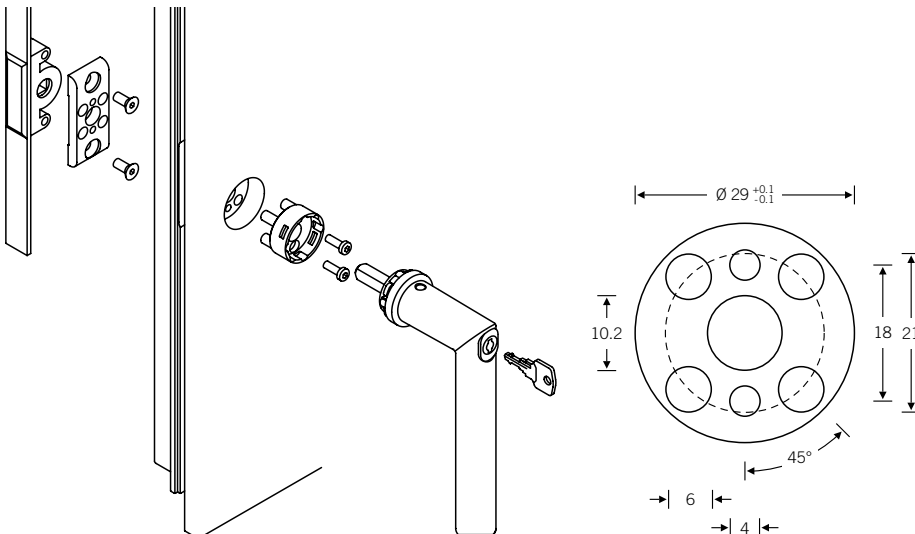
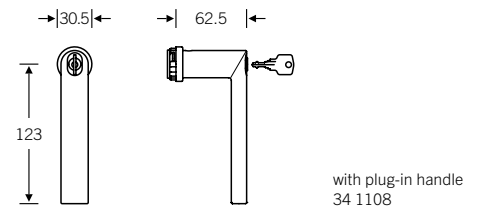
34 71

- 34 71423 (spindle projection variable from 29–34 mm)
- 34 71424 (spindle projection variable from 34–39 mm)
- 34 71723 (push-button, spindle projection variable from 29–34 mm)
- 34 71724 (push-button, spindle projection variable from 34–39 mm)

Plug-in handles for windows with timber profiles, lockable

An additional fixing rose and mounting plate are required.

Accessory bag:
03 0401 00001 0400



Please note:

A depth of 12 mm is required in the timber profile to accommodate the fixing rose. The area routed out on the profile for the mounting plate needs to measure at least 6.5 × 58 mm.

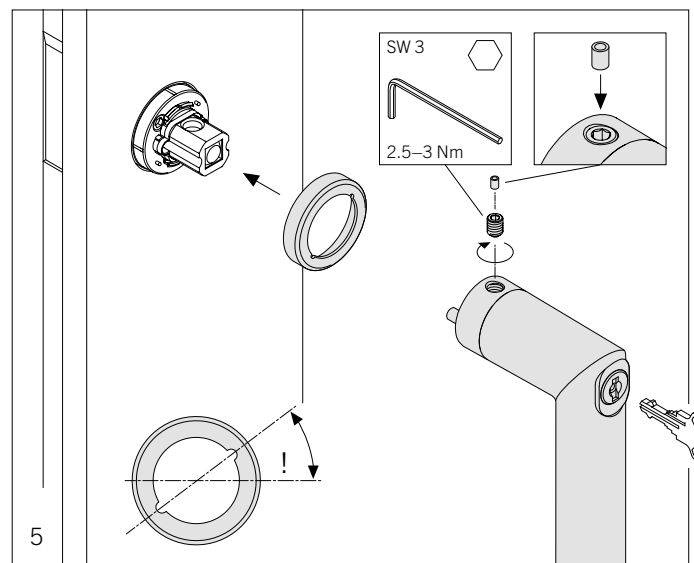
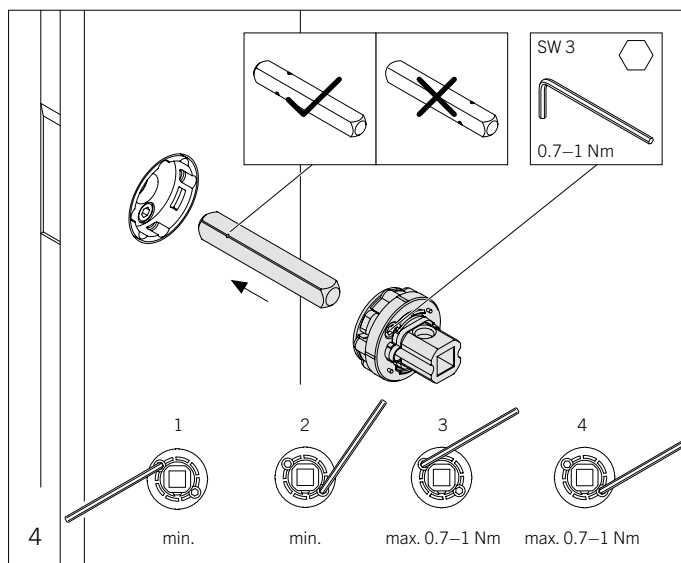
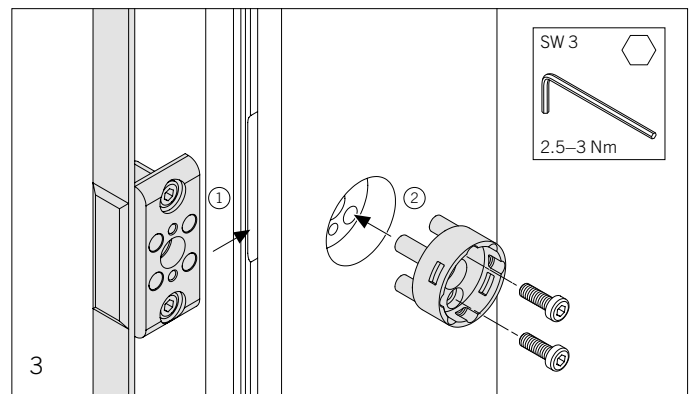
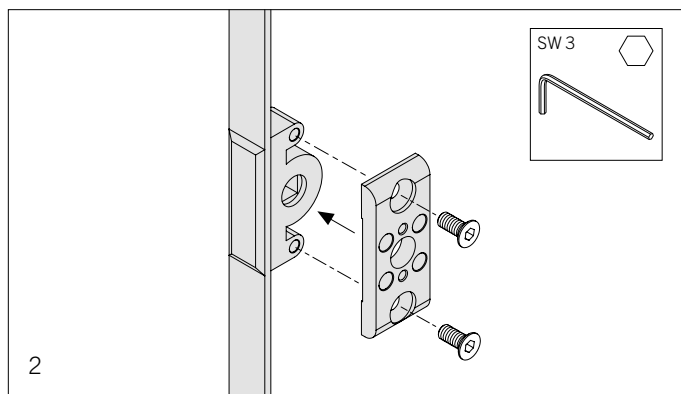
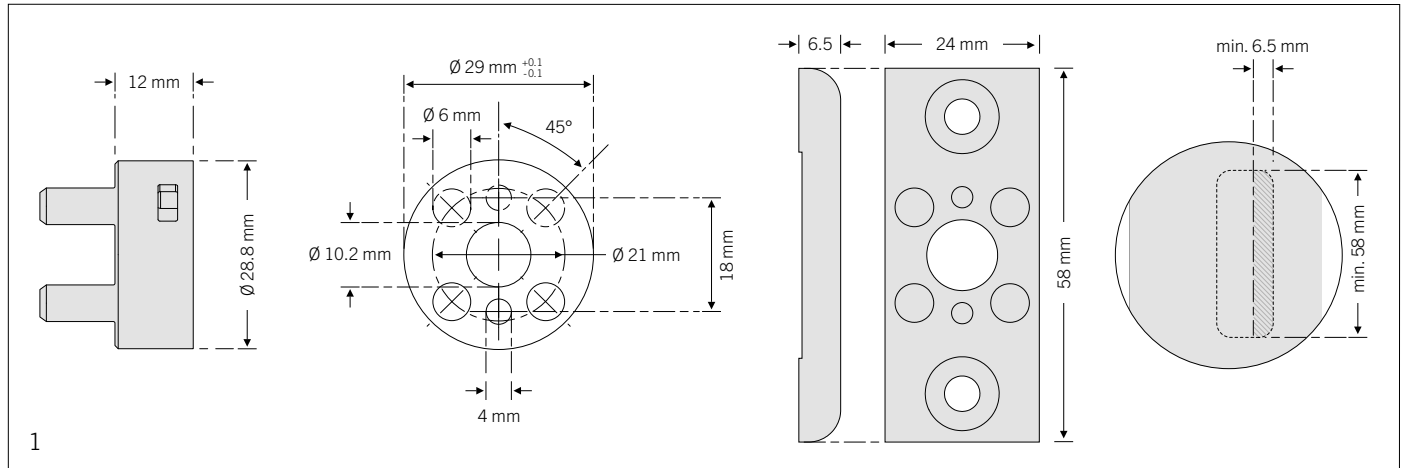
Models featuring a lock cylinder can also be fitted to burglar resistant windows. The following models are available as lockable variants with 100 Nm resistance to forcing: 1001, 1076, 1078, 1093, 1108, 1144, 1222, 1244

No "tilt-to-turn" action possible

Please note that it is only possible to rout out the recesses for FSB plug-in handle solutions using a CNC machining centre. High-precision routing-out data are to be found at www.fsb.de/cnc

Technical Details

Plug-in handles for timber windows, lockable





Franz Schneider
Brakel GmbH + Co KG

Nieheimer Strasse 38
33034 Brakel
Germany

Phone +49 5272 608-0
www.fsb.de · info@fsb.de