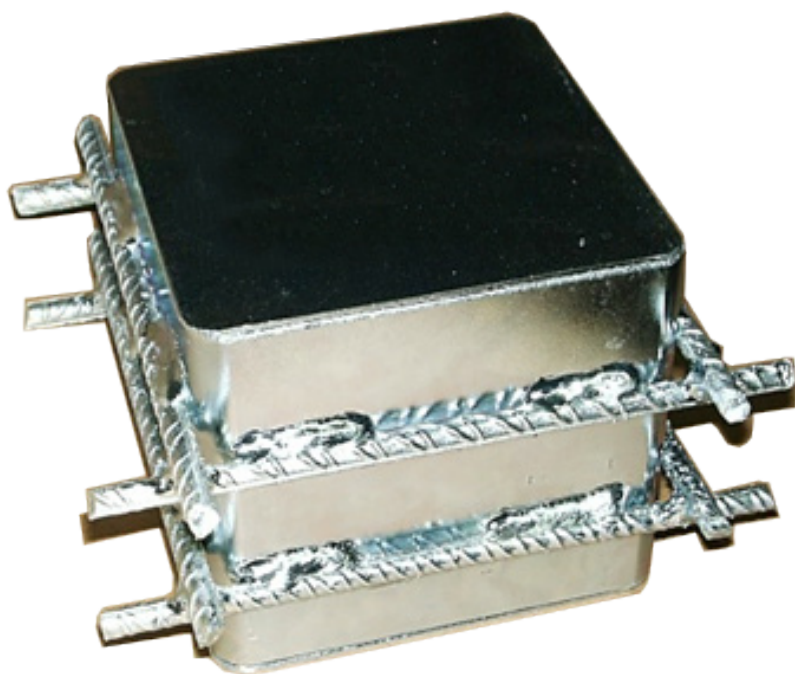


# VT-BOX

Mounting Procedure



*Vibratec*<sup>®</sup>  
akustikprodukter

## Mounting Procedure VT-BOX

### Content

#### 1. Introduction

#### 2. Description

A. Preperation of the formwork

B. Positioning of VT-BOX

C. Concrete slab pouring

D. Concrete slab lifting

F. Photo examples

---

Sweden

Tel: +46 176 20 78 80

e-mail: [info@vibratec.se](mailto:info@vibratec.se)

Norway

Tel: +47 33 07 07 50

e-mail: [info@vibratec.no](mailto:info@vibratec.no)

Denmark

Tel: +45 49 13 22 44

e-mail: [info@vibratec.dk](mailto:info@vibratec.dk)

Estonia

Tel: +372 56 66 29 93

e-mail: [info@vibratec.ee](mailto:info@vibratec.ee)

---

We are continuously developing and improving our products and therefore design and specifications in our datasheets may be changed without prior notice

## 1. Introduction

The aim of this document is to present the different phases for VT-BOX mounting.

## 2. Description

### A. Preparation of the formwork

The first operation consists in preparing correctly the formwork and the support area where the VT-BOX cases are going to be installed.

First of all, you need to localize by laser or chalk line the exact position of each case on the support (normally the roof). The position is marked as a cross with a permanent marker on the support.

Then we place the leveling plates on these crosses, if necessary. It is really important that all surfaces where the cases are going to be placed are horizontal and in the same plane. Then we prepare the perimeter formwork to define the limits of the concrete slab. We cover the internal surface of the formwork with a rock wool panel of 20 or 30mm and 10cm higher than the concrete slab. The function of the layer is to make the elevation of the slab easier.

Then we put a resistant plastic film over all the surface where we will pour the concrete slab with a margin of about 50cm on the formwork. This will avoid the concrete to stick on the support and will avoid the concrete to go out of the formwork. This operation should be done carefully to avoid undercut or a concrete pocket that would make the elevation more complicated. The folds that have to be made in the corner could be covered with reinforced adhesive tape to avoid the concrete to enter.

The edges of the plastic film must be maintained on the formwork with adhesive tape too.

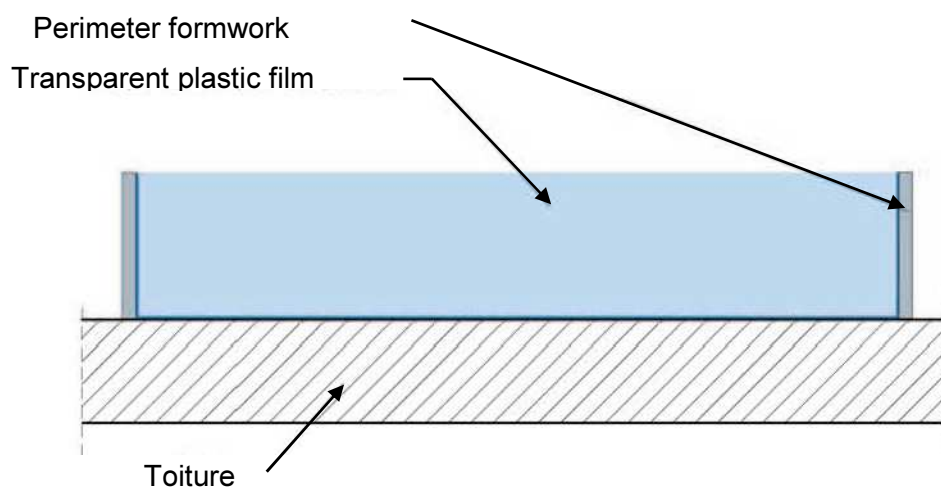
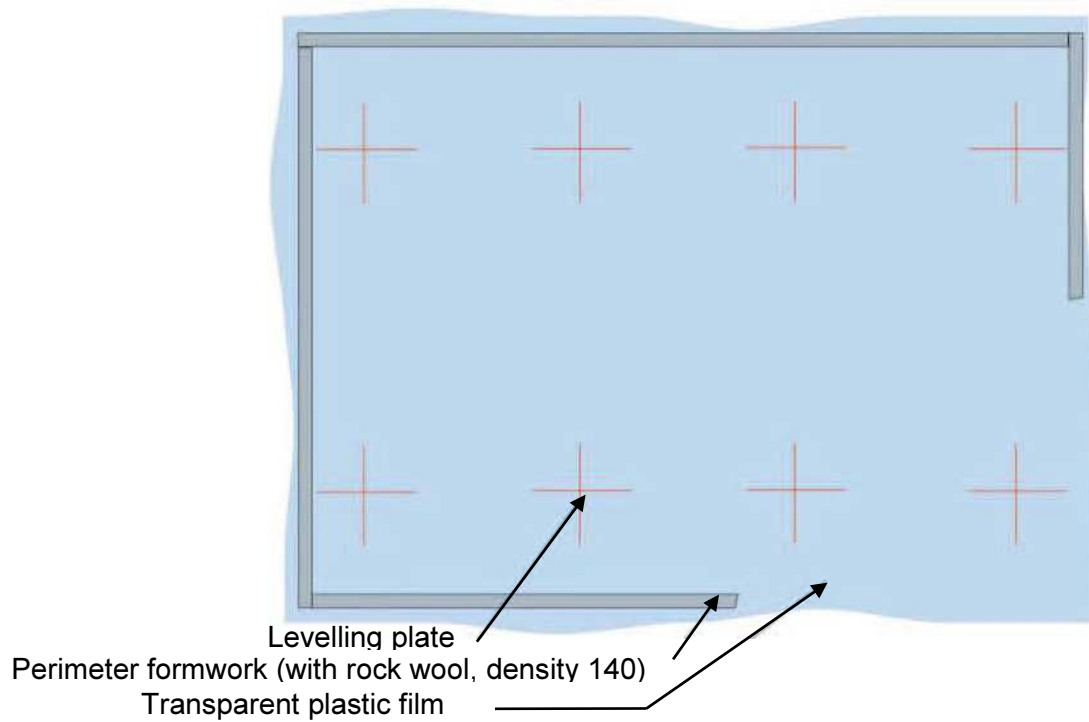
---

Sweden  
Tel: +46 176 20 78 80  
e-mail: [info@vibratec.se](mailto:info@vibratec.se)

Norway  
Tel: +47 33 07 07 50  
e-mail: [info@vibratec.no](mailto:info@vibratec.no)

Denmark  
Tel: +45 49 13 22 44  
e-mail: [info@vibratec.dk](mailto:info@vibratec.dk)

Estonia  
Tel: +372 56 66 29 93  
e-mail: [info@vibratec.ee](mailto:info@vibratec.ee)



Sweden  
Tel: +46 176 20 78 80  
e-mail: [info@vibratec.se](mailto:info@vibratec.se)

Norway  
Tel: +47 33 07 07 50  
e-mail: [info@vibratec.no](mailto:info@vibratec.no)

Denmark  
Tel: +45 49 13 22 44  
e-mail: [info@vibratec.dk](mailto:info@vibratec.dk)

Estonia  
Tel: +372 56 66 29 93  
e-mail: [info@vibratec.ee](mailto:info@vibratec.ee)

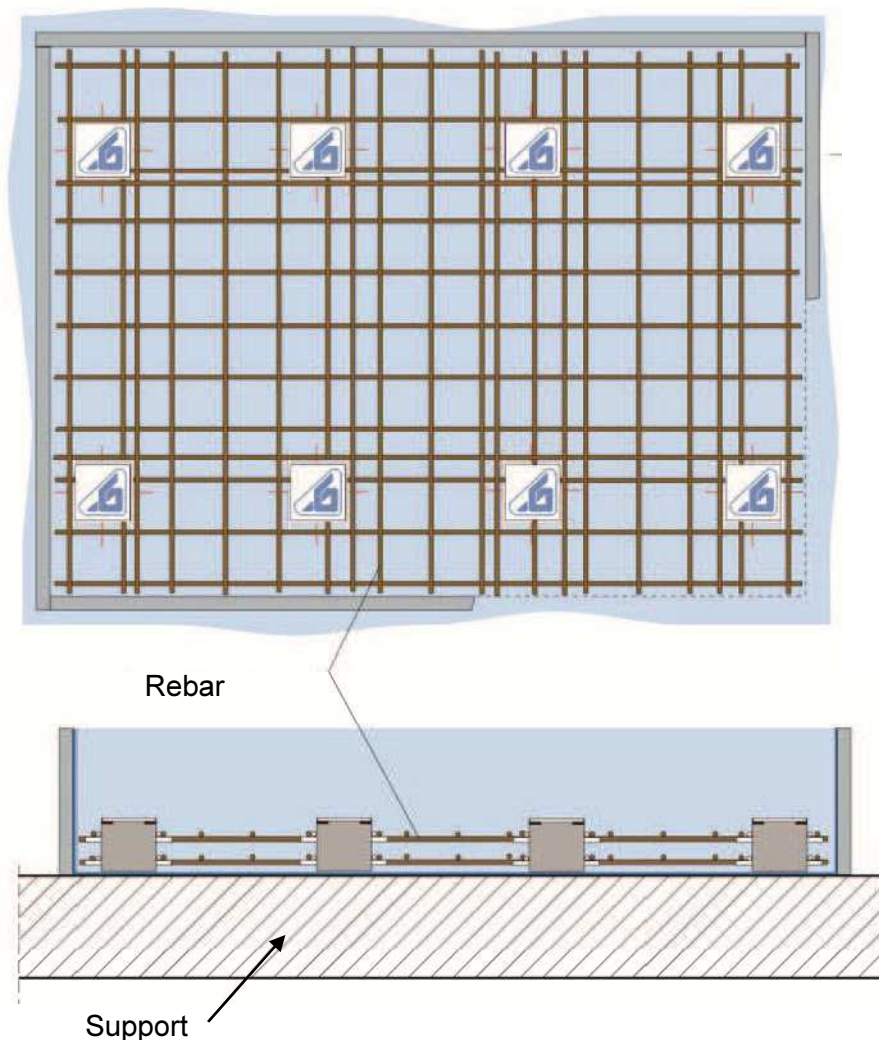
## B. Positioning of VT-BOX

Normally, VT-BOX cases are delivered separately from spring and lifting system as the VT-BOX is mounted in two phases. The VT-BOX case has an upper and lower hatch fixed and sealed with silicon sealant. We place all the sealed cases on the leveling plates over the plastic film. We take care to put it horizontally and with the arrow pointing up.

BE CAREFUL: A CASE POSITIONED WITH THE ARROW

POINTING DOWN WOULD NOT BE USABLE.

Then we put the lower and upper rebar that we fix to the bars welded on the case.



Sweden  
Tel: +46 176 20 78 80  
e-mail: [info@vibratec.se](mailto:info@vibratec.se)

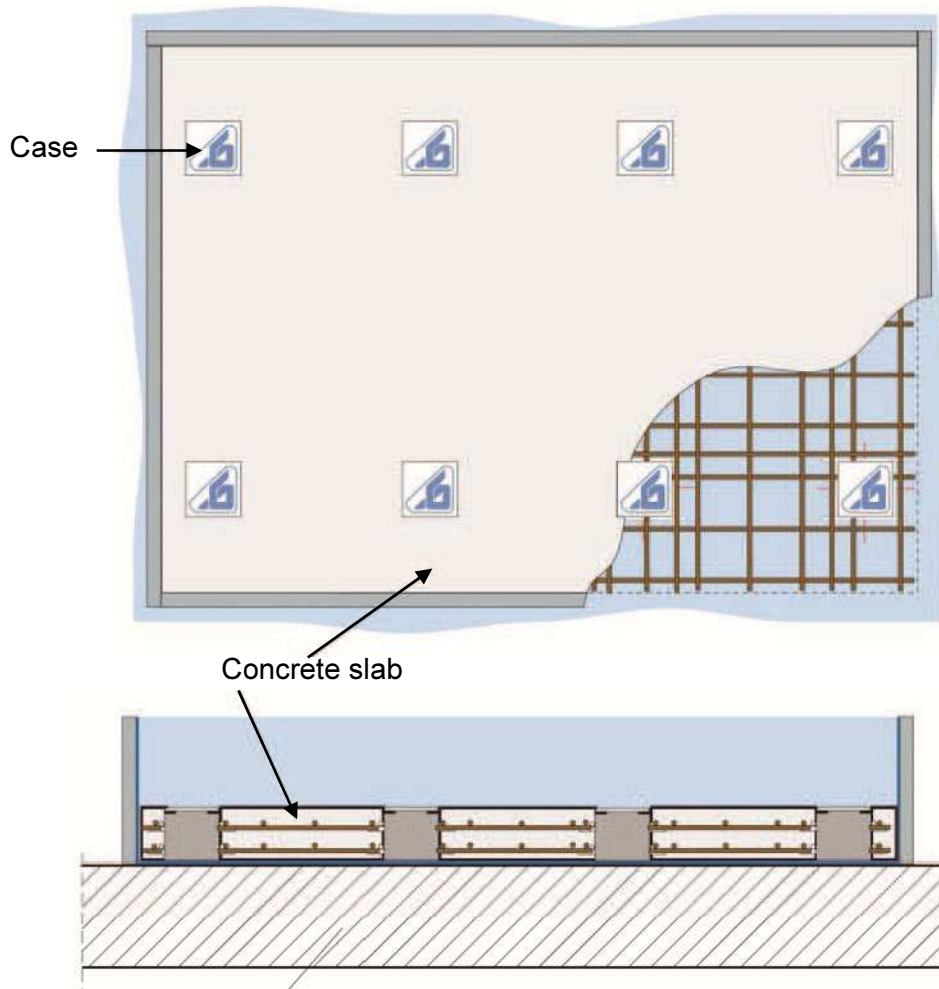
Norway  
Tel: +47 33 07 07 50  
e-mail: [info@vibratec.no](mailto:info@vibratec.no)

Denmark  
Tel: +45 49 13 22 44  
e-mail: [info@vibratec.dk](mailto:info@vibratec.dk)

Estonia  
Tel: +372 56 66 29 93  
e-mail: [info@vibratec.ee](mailto:info@vibratec.ee)

### C. Concrete slab pouring

The next step is to pour the concrete slab. It has to be made carefully to avoid moving cases and plastic film.



Sweden  
Tel: +46 176 20 78 80  
e-mail: [info@vibratec.se](mailto:info@vibratec.se)

Norway  
Tel: +47 33 07 07 50  
e-mail: [info@vibratec.no](mailto:info@vibratec.no)

Denmark  
Tel: +45 49 13 22 44  
e-mail: [info@vibratec.dk](mailto:info@vibratec.dk)

Estonia  
Tel: +372 56 66 29 93  
e-mail: [info@vibratec.ee](mailto:info@vibratec.ee)

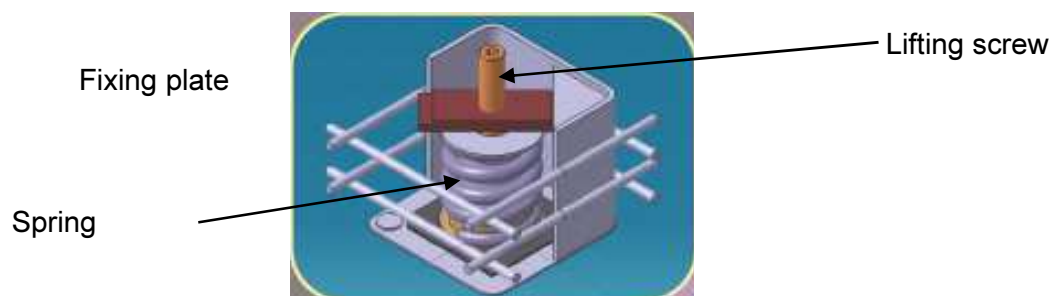
We are continuously developing and improving our products and therefore design and specifications in our datasheets may be changed without prior notice

#### D. Concrete slab lifting

Once the concrete is totally cured, we can lift the complete block. We open the upper hatch of each case and we place the spring, the fixing plate with lifting screw in all the cases.

The first phase consist in separate the concrete slab from the support In this first step it is really important to screw really progressively the leveling screws until separate the concrete block from the floor.

Once separated it must be lifted until its final height tightening the lifting screws.



Sweden  
Tel: +46 176 20 78 80  
e-mail: [info@vibratec.se](mailto:info@vibratec.se)

Norway  
Tel: +47 33 07 07 50  
e-mail: [info@vibratec.no](mailto:info@vibratec.no)

Denmark  
Tel: +45 49 13 22 44  
e-mail: [info@vibratec.dk](mailto:info@vibratec.dk)

Estonia  
Tel: +372 56 66 29 93  
e-mail: [info@vibratec.ee](mailto:info@vibratec.ee)



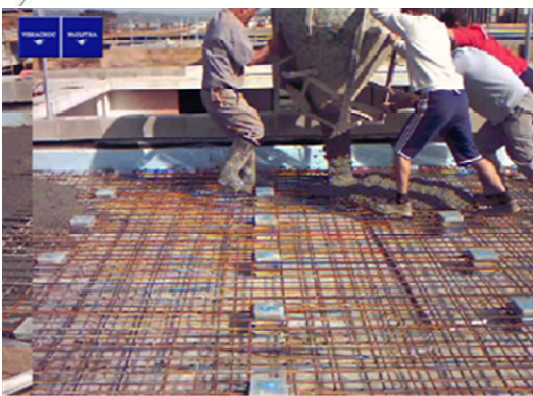
F. Photo examples



Example of marking



Example de positioning



Exemple of pouring



Exemple of lifting

Sweden  
Tel: +46 176 20 78 80  
e-mail: [info@vibratec.se](mailto:info@vibratec.se)

Norway  
Tel: +47 33 07 07 50  
e-mail: [info@vibratec.no](mailto:info@vibratec.no)

Denmark  
Tel: +45 49 13 22 44  
e-mail: [info@vibratec.dk](mailto:info@vibratec.dk)

Estonia  
Tel: +372 56 66 29 93  
e-mail: [info@vibratec.ee](mailto:info@vibratec.ee)